

# CS STUDIO ARCHITECTS

---

## FOLLAINVILLE - DENNEMONT MULTI SERVICE CENTRE

LOCATION: FOLLAINVILLE AND DENNEMONT, NORTH EAST FRANCE

---

### BACKGROUND

The second Global Award Project required the design of a multi-service centre. One of the main aims of the centre was to bring the communities of the villages of Follainville and Dennemont which is situated in the North East of France together. Exciting workshops with 120 children between the ages of 6 and 11 and about 30 adults from the two villages were held.

### DESIGN

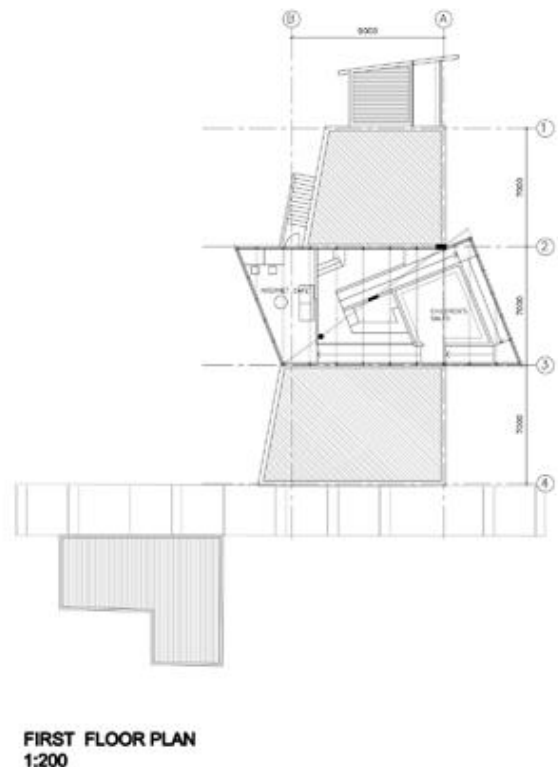
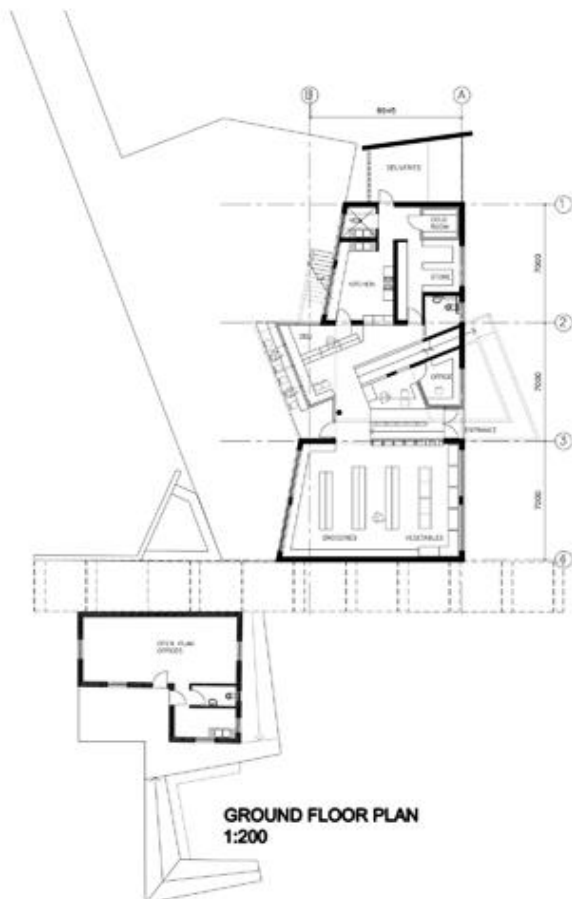
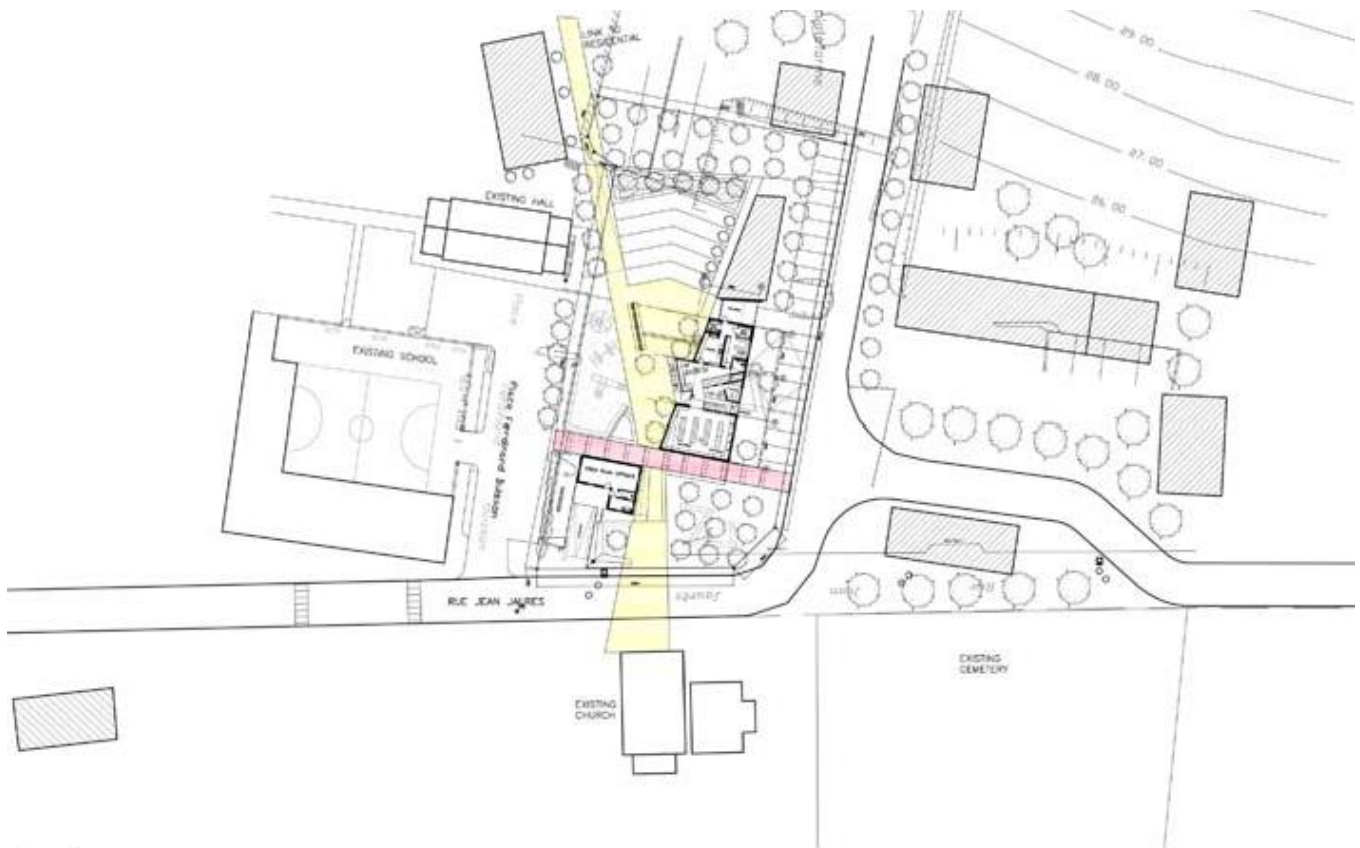
The workshops with the children required each child to do an A3 drawing of how they will solve the project. The results were very creative coloured drawings, which depicted different solutions. Some children drew a single building with more than one floor and with different departments. Others drew smaller shops surrounding a square with trees and a fountain. Many children drew wind turbines and solar panels to generate energy showing their concern for the environment. Nearly all the children drew a restaurant next to a play area where they can relax with their parents. It came out that there were only two bars in the two towns and these were not suitable for children. The adult workshops also highlighted the concern that there are two villages and that they are separated by a very busy road. People felt that this was a major problem.

As a result of the workshops it was decided that due to the quality of the children's input it will be possible to do

mosaic murals using recycled ceramic tiles and objects. The children will work with local artists and the teachers to develop the drawings and then do the art work on mesh while professional tilers will fix it onto the building. Combining the ideas from the children and adults we proposed an urban layout with four possible solutions. The four solutions were, outdoor - indoor room, L- shape, Zigzag and collision. The majority vote eventually went to collision as it brought together all the ideas. It consisted of three buildings making an outdoor square linking to an amphitheatre. However, the following day the municipal council requested a single box for the multi-services centre which is more in line with a conventional grocery store.

As it is important to consider all impacts on a process to allow for the sustainability of the project in its local context, we changed the design to a single box consisting of three elements of which the centre becomes the social generator. The typology of the multi-purpose store is challenged and the social needs of the residence as identified in the participatory process are given priority. The central space floats across the box and links the schools and community social areas to future developments. The urban link between the church and the new housing gives order to the design. The restaurant component is situated next to the playground with an outdoor stage and grassed amphitheatre.

# CS STUDIO ARCHITECTS



# CS STUDIO ARCHITECTS

---

