

# CS STUDIO ARCHITECTS

---

## THE HEART OF THE METROPOLIS HELSINKI CENTRAL LIBRARY ARCHITECTURAL COMPETITION

LOCATION: HELSINKI, FINLAND

---

### SUBMISSION: IN BETWEEN

The design concept emphasises the notion of solid contained spaces and the in between. It is an “edge” condition which mediates between Helsinki City landmarks and the people.

The entrances sit off centre in a transparent manner with access from the east and the west. This allows the park to flow through the building. On the west side is a large foyer space which interacts and allows visual connection back to the Parliament House, National Museum, Kiasma, Museum of Contemporary Art, Helsinki Music Centre and Finlandia Hall, Centre of Congresses and Events and newly planned urban development.

A vertical timber tree trunk element wraps around a portion of the spaces leaving the foyer more transparent. The West facade and roof over the foyer have a double skin with operable timber louvres. In winter the mood changes and areas can be closed off in order to be heated, to create cosy indoor areas.

At the street level the ground floor which is 5 metres tall, retracts three metres to create an active shopfront edge where people can walk under the building. This allows people to interact with the library through digital screens, exhibitions and vistas, without entering the building, thus allows all four urban edges are activated.

Walking from the railway station the garden welcomes one and facilitates pedestrian movement directly along the southern facade to the urban park. The garden ushers visitors towards the entry on the east side. This entrance is multi-functional with bicycle parking, pram and push-car storage and access for VIP, the physically challenged and small deliveries. The book automat in this area.

The east side contains many services and the service yard works off a service road. The services will be hidden with walls up to three metres tall, with quality colourful ceramic mosaic work by local artists, which depicts the cultural diversity of the city.

The north facade has the multi-purpose hall at ground floor which opens onto the park. Access to the cinema and the restaurant will look out further away toward the waterfront which forms part of the future urban plan.

### ARCHITECTURE

People are the most important ingredient in the project. This should be from the design phase through to construction and the functioning of the library. We are of the opinion that all individuals have creative energy that can produce great solutions. We are proposing a concept, but will embark on a process of participation by all stakeholders and users to develop the design. Hence the people centeredness of the concept.

The design concept has four cones located in a timber skin which floats around it. The tallest most slender cone invites the visitor to enter and explore. It will house all recent literature newspapers magazines exhibitions, experiments, media shows etc. It will be seen as the constantly changing and up to date information tower.

The larger cone to the north contains the children’s world from the ground floor – up over many different levels. This will be a vibrant and colourful area.

The cone to the south of the entrance houses the sauna at ground floor which has a view onto the garden and contemplative space. The contained spaces above are for the collections as will be decided by library staff. The fourth and largest cone sits near the existing city fabric and it will be the quietest and more traditional library type environment attracting business persons, academics and avid readers.

The constructions of the cones are of clay bricks, 60cm wide which will be plastered and painted. A reading lounge with a fireplace and access to coffee will be on one or two levels to heat up cosy reading and doing areas during the cold days. All glazing will be triple glazing. Wall construction will consist of well insulated panelling and sliding windows.

# CS STUDIO ARCHITECTS

The roof forms a fifth elevation and has a garden with restaurant. The roof as with the rest of the concept has multi-purpose spaces.

## USABILITY

The concept is designed around allowing the people of Finland and Helsinki to have an ongoing input in the life of the building.

The in between spaces can be adapted by the users to suite their immediate needs. We propose to introduce large moveable frames with natural rope. Onto this, different colour lights can be cast to change the mood of the space. The competition brief addresses the importance of stimulating all the senses. The rope gives off a distinctive natural smell and the changing light is a link to the Aurora Borealis. Certain areas will have elements constructed of recycled material, for example light fittings.

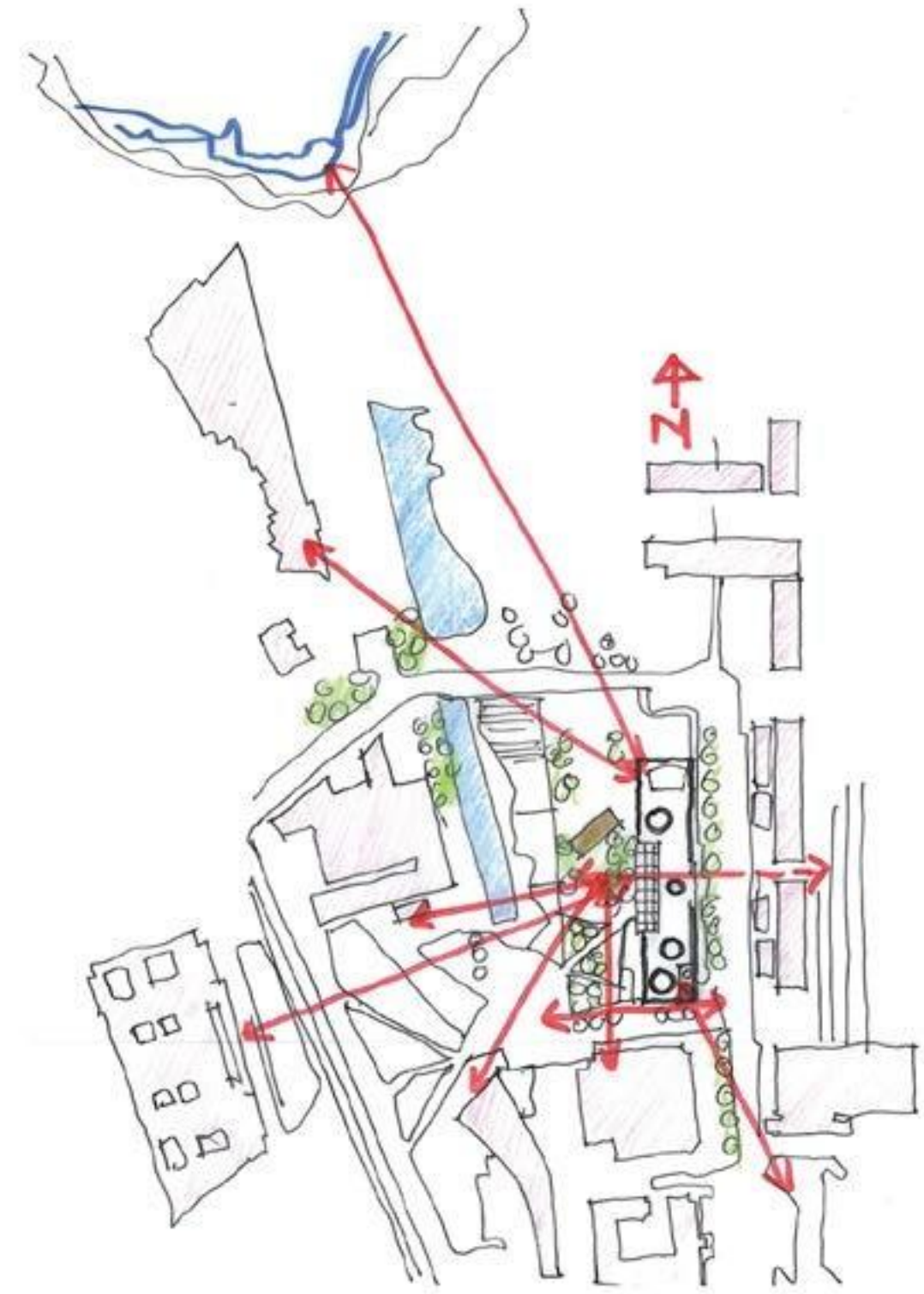
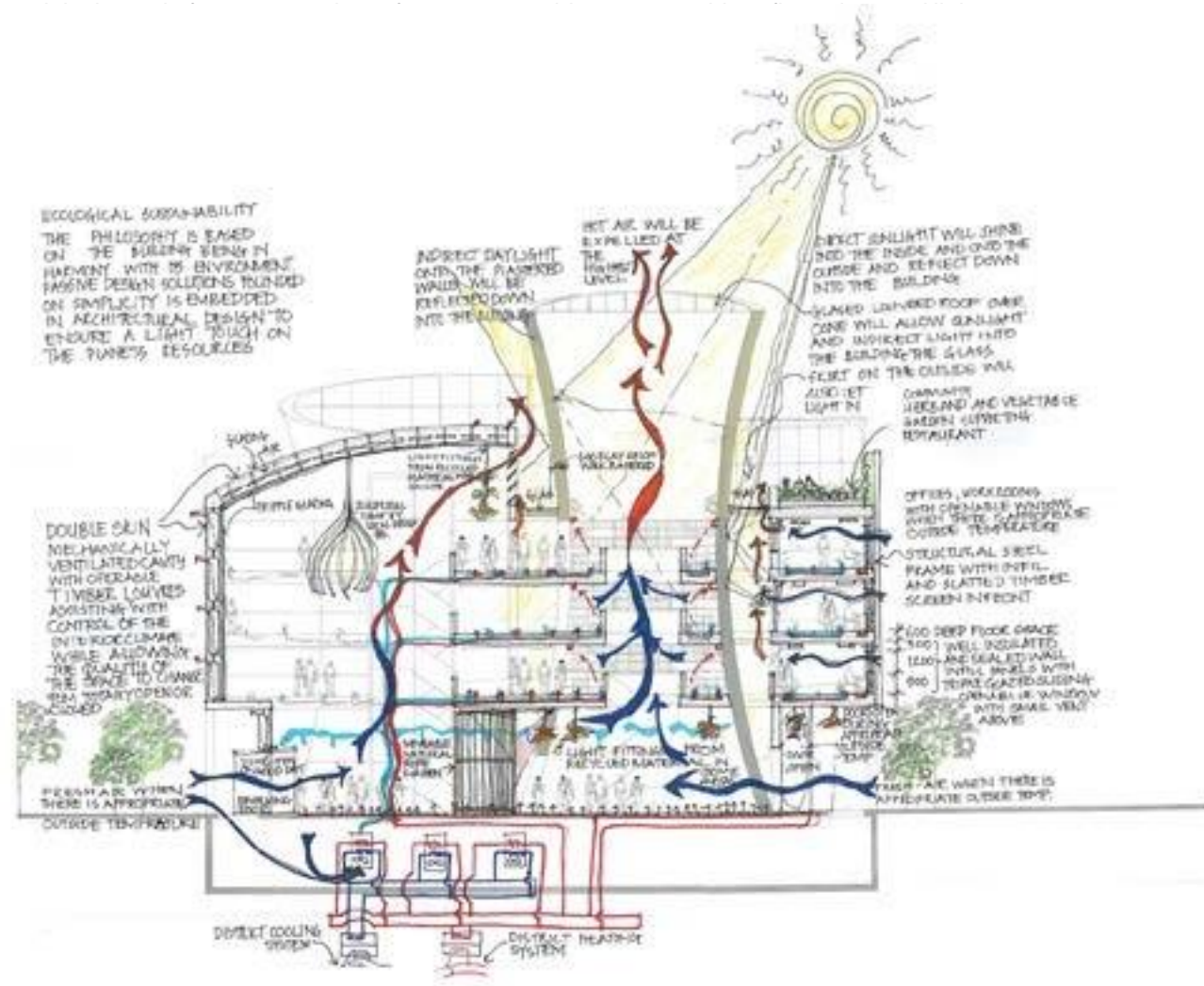
In winter gas fires will be used in the cones and an open

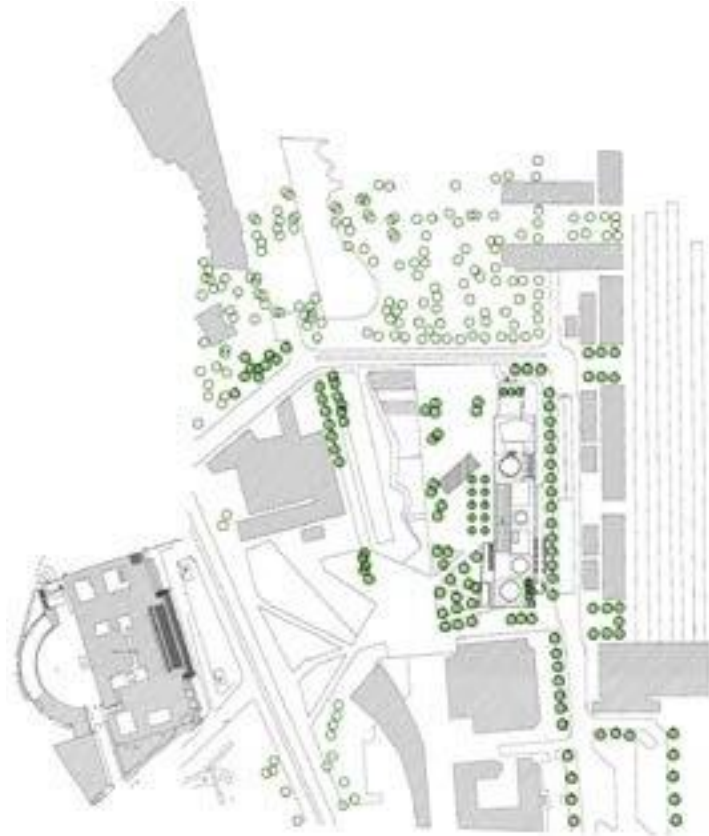
The importance of up to date library technology cannot be stressed enough. We propose however that it does not dictate the architecture. We have allowed for 60cm deep floor ducts and 100cm high hollow handrails and service shafts to contain technology and services.

## ECOLOGICALLY SUSTAINABILITY

Passive design is in the longer term the most sustainable. The design's main focus is on natural light and ventilation and the need for the individual to be able to control their environment. All walls will be well insulated and windows triple glazing. In the workroom, offices and study spaces along the straight facades, there will be natural light and ventilation though openable windows.

The light cones with their openable glass roofs and surrounding glass skirts allow the walls of the cones to be flooded with natural light, both inside and outside to

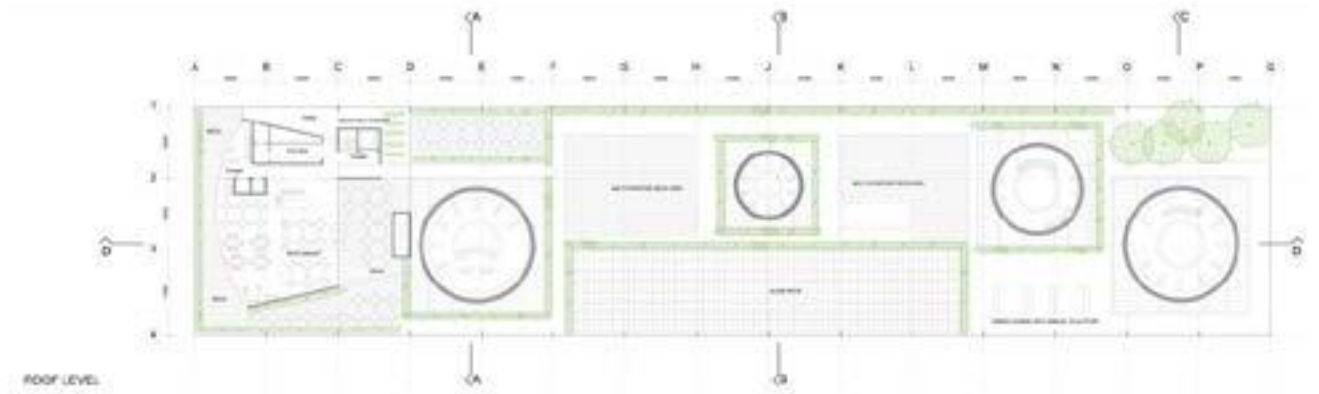




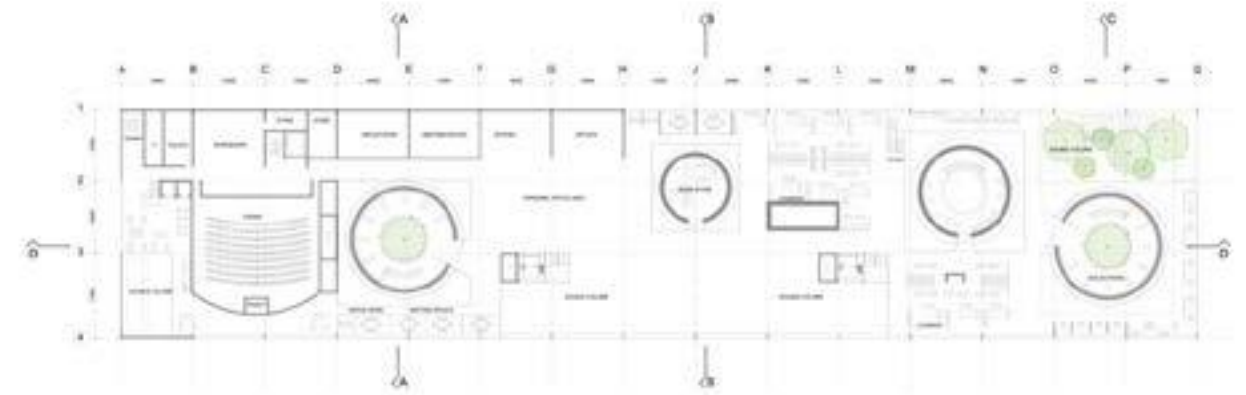
URBAN PLAN



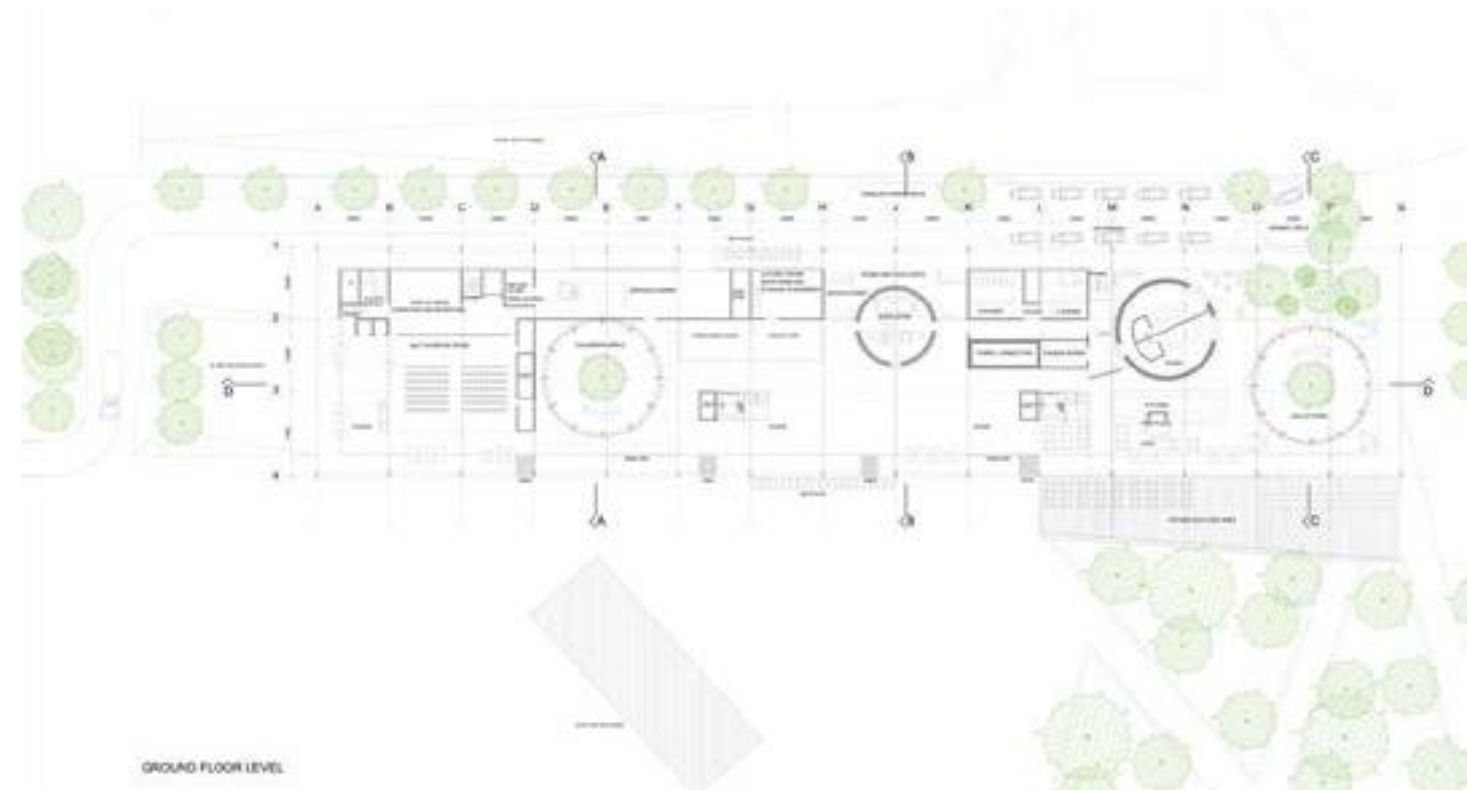
SITE DEVELOPMENT PLAN



ROOF LEVEL



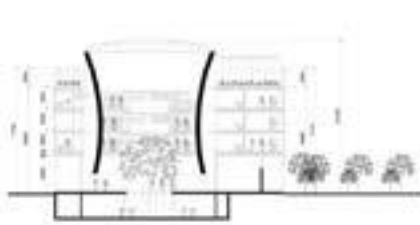
THIRD FLOOR LEVEL



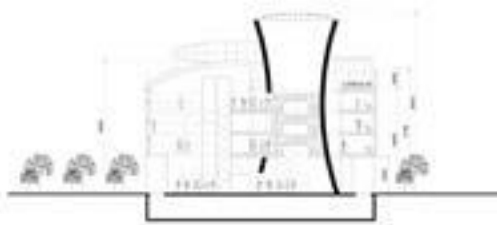
GROUND FLOOR LEVEL

# CS STUDIO ARCHITECTS

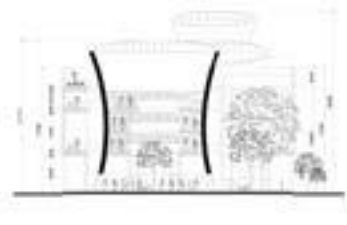
---



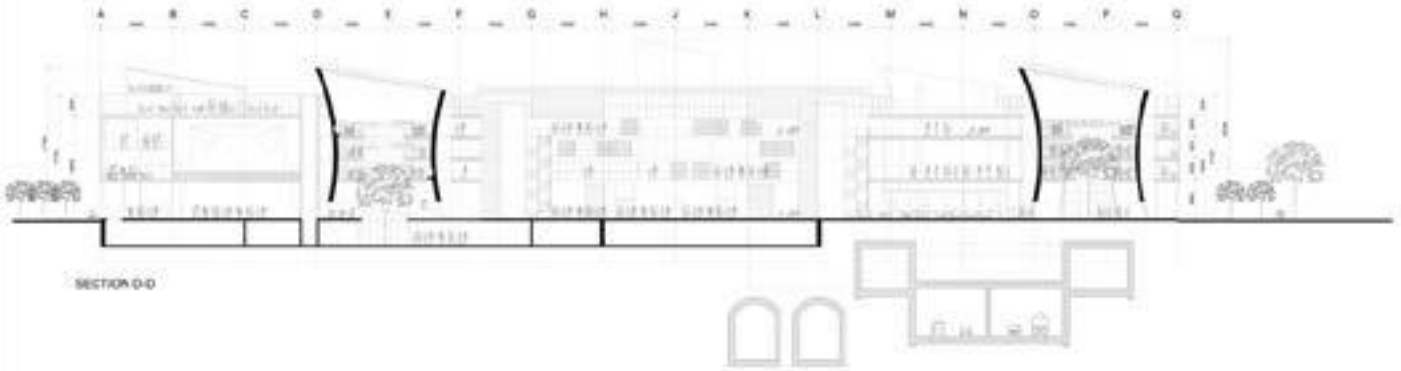
SECTION A-A



SECTION B-B



SECTION C-C



SECTION D-D