



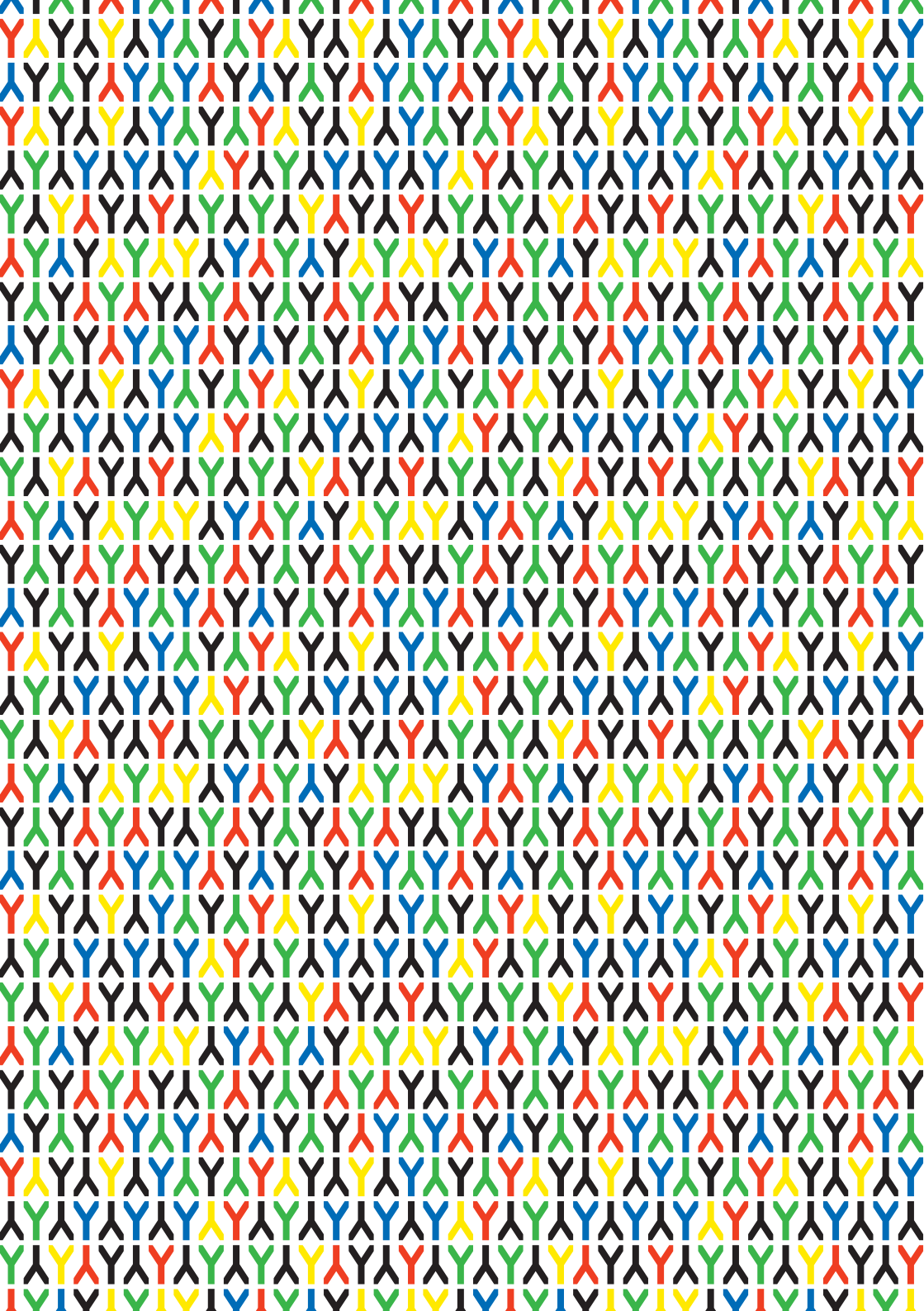
FRONTIERS

OF

INTEGRATION

CAPE TOWN

2011



F R O N T I E R S
O F
I N T E G R A T I O N
C A P E T O W N
2 0 1 1

STUDENT DESIGN WORKSHOP AND INTERNATIONAL LECTURE SERIES
ORGANIZED BY CARIN SMUTS / CS STUDIO
WITH ISABEL HERAULT (ADM / ECOLE SPECIALE D'ARCHITECTURE)
AND SPELA HUDNIK (LJUBLJANIA FACULTY OF ARCHITECTURE)



CAPE TOWN
DOWNTOWN

MOWBRAY
GOLF COURSES -
PINELANDS

CAPE FLATS
SHANTY TOWN

CAPE POINT





FRONTIERS OF INTERGRATION

Carin Smuts

The Frontiers of Integration Design Workshop and Lecture Series, International was held in Cape Town from the 18th to the 21st of April 2011. The student workshop looked at innovative housing solutions on the Mowbray and Pinelands golf courses adjacent to the N2 Highway in Cape Town. The workshop and lecture series was organised by CS Studio Architects with the support of the Cape Institute for Architects, the Cape Peninsula University of Technology, Group Five, Umnyama Paints, and Midas Earthcote.

It included architecture students from École Spéciale d'Architecture in Paris, France; Univerza v Ljubljani in Ljubljana, Slovenia; and local students from the Cape Peninsula University of Technology. It also featured acclaimed architects from France, Slovenia, and Italy - Isabel Hérault, Spela Hudnik and Peter Gabrijelčič, and Fabrizio Carola respectively - who spoke in the public lecture series co-hosted by the Cape Institute for Architects. Distinguished local academics and professionals also spoke during the workshop, namely Edgar Pieterse, Alan Storey, and Julian Cooke.

Students divided into seven groups of six or seven members, each proposing a different scheme.

The primary aim of the initiative is to engage the broader public in a discourse that will result in an integrated Cape Town. In South African cities the consequences of colonial and Apartheid planning persist and urban areas tend to be ethnically and culturally specific, separated by geographic and physical features. As a result much of the urban labour force still lives in townships outside the city. It was in this regard that the Frontiers of Integration Design Workshop embraced the challenge of entrenching integration and connectivity in South African society in the context of the built environment.

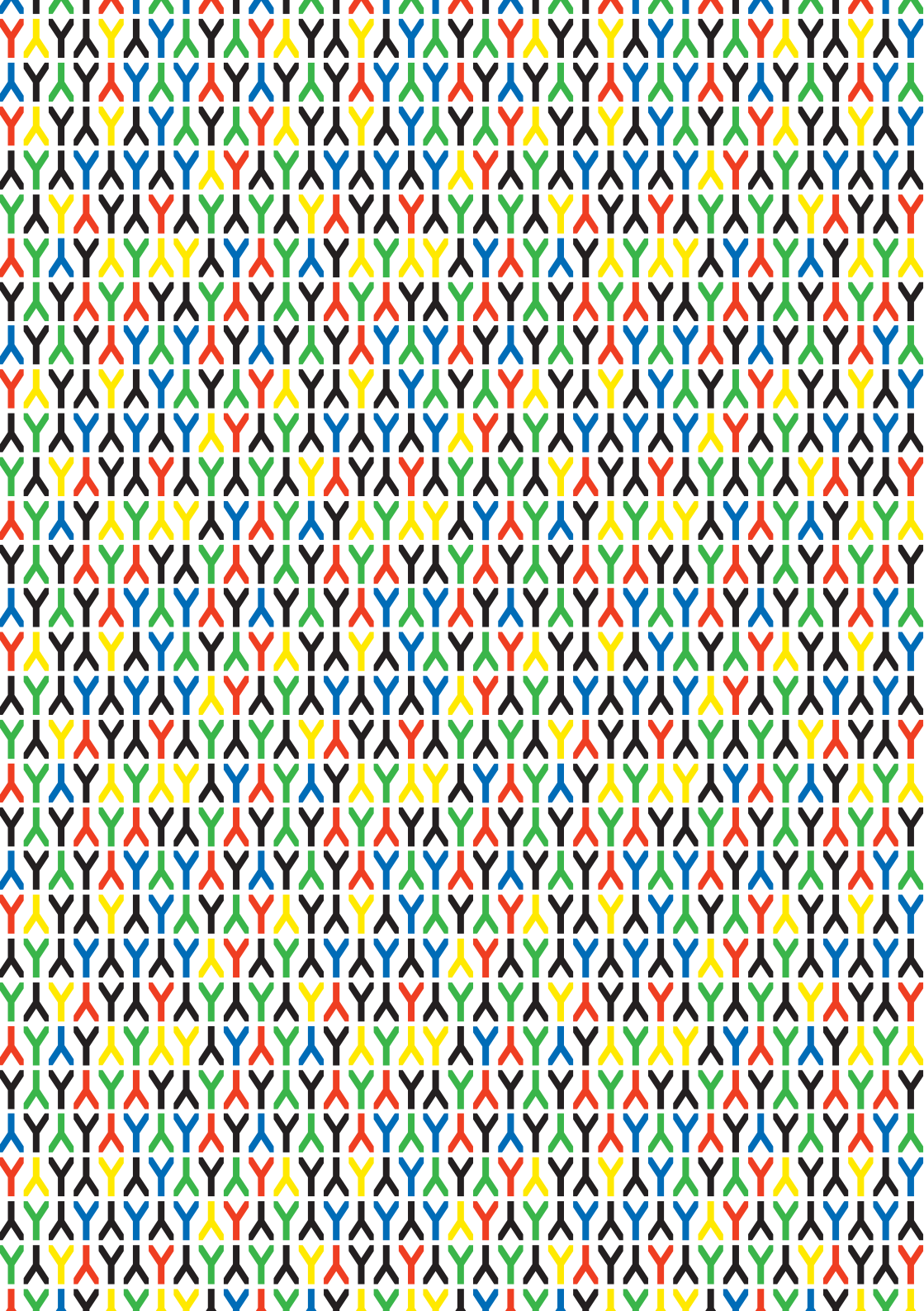
It was with these goals in mind that the site of the student project was chosen. The golf courses stand on the convergence point of multiple ethnically and culturally specific communities - of Pinelands, Athlone, Langa, Rondebosch and Mowbray - and looked at out of the box schemes to house 300 000 people, focussing on integration and connectivity between the communities. As a cultural and ethnic apex close to, and with fantastic existing road and public transport connections to, the city the site holds enormous potential to be a 'frontier of integration'. It was in this light that the workshop challenges the validity of its current use with the presentation of alternative possible realities.

The proposals were diverse though all represented a people-based architecture and tackled existing notions of housing, addressing the issue as an exercise in community design as opposed to house design. Holistic solutions were sought and infrastructures across the scale were considered.

Factors of commutability and transportation were taken into account. Community was looked at in the micro and macrocosm as well as in its capacity for expansion and connectivity to surrounding communities. Densities were increased, though varied, and mixed use buildings were proposed with an eye to community structures and urban variation. Building masses tended to be in the vicinity of three and six stories and emphasized the site's existing greenery and water features in extensive public space networks.

Ultimately vibrant and contemporary schemes were mooted which harness forces of a community energy in a bid to create integrated communities with great appeal to all.





ENCOUNTERS

Carin Smuts

CS Studio Architects

Isabel Hérault

Hérault Arnod Architects / ESA-Paris

Spela Hudnik

Monochrome Architects / UL-Ljubljana



Carin Smuts

CS Studio Architects

Carin Smuts gained her diploma from the UCT in 1984. CS Studio, the firm she founded in 1989, deals with projects of all sizes: large structures like the Laingsburg Multi Purpose Center or extensions to Cape Town University but also rural community hostels, community centres and currently the project for Caledon-Helderstroom prison.

The firm has moved beyond conventional architectural practice to an approach which involves all stakeholders in the creative processes of planning, design and construction. The focus is on an interactive participative process rather than solely on an end – product. The Studio has completed over 100 significant projects in rural and urban contexts. The practice has a reputation both locally and internationally for producing creative, quality architecture with limited budgets. The projects are of a public nature and include educational, healthcare, arts, culture and heritage and religious buildings, as well as community centres and disabled facilities. Projects involving integrated development planning and low cost housing have also been undertaken and completed successfully. The scope of work also included the restoration of historical monuments. The practice has received recognition for producing quality work in both the architectural and social contexts – providing appropriate, sustainable solutions. Carin was awarded the International prize for durable architecture in 2008 at the Villa Savoye in Poissy, France.

Picture : Guga S'thebe cultural centre - Langa, Cape town (South Africa).





Isabel Hérault

Hérault Arnod Architects

Isabel Hérault and Yves Arnod set up the Hérault Arnod office together in the 1990s in Grenoble, and then in Paris. The office works on very varied programmes at different scales, rejecting any notion of specialisation. Every time, the desire to move away from ready-made solutions or recipes has prompted them to put forward original responses that derive their substance from the reality of a situation.

The office's work includes The World Head Office of Skis Rossignol, the Bike Building, offices in Paris, the Grenoble Skating Rink, the 2 Alpes sports and theatre, etc. HA is currently working on the conversion of a mining site in northern France, the 9/9bis in Oignies, which includes the Métaphone, a totally new kind of concert hall and urban musical instrument. Other works in progress are several modern music halls and theatres, and the new sports and concert hall in Brest. At the same time, HA works on small experimental projects, such as the installations along the ski slopes Serre-Chevalier, opened this winter.

Alongside the architectural practice, Isabel Hérault has since 2004 taught project design at the Paris Ecole Spéciale d'Architecture. She also takes part of the post graduate course on "ADM - Architecture of Milieus". She regularly runs international workshops and gives lectures abroad.

Picture : Rossignol Building - Saint Jean de Moirans (France).





Spela Hudnik

Monochrome Architects

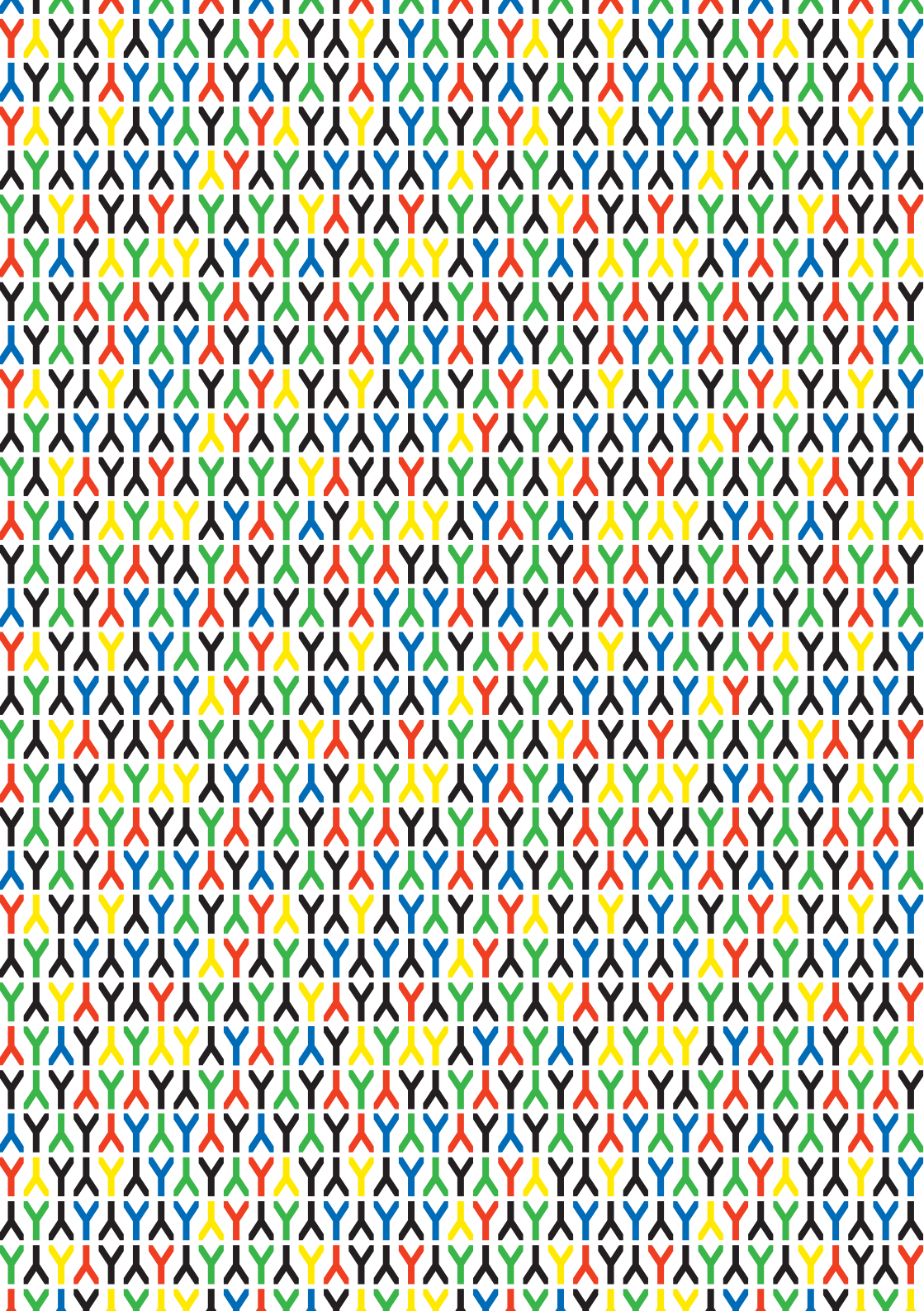
Spela Hudnik is co-founder of the architecture studio MONOCHROME ARCHITECTS together with Peter Vezjak.

They present multidisciplinary and experimental projects through contemporary cultural approach through different practice and theory. They are also involved in film and design. Monochrome Architects create individual and communicative architecture dialogs, global networks of intellectual capital exchange. They have exhibited their work in Europe and were part of the project Open Simsim at the 12th Architecture Biennale in Venice.

Spela Hudnik is a founder and a director of International Architecture Biennale Ljubljana (Bionic Territories, Ultraskin, Euporia, Contemporary Ghetto). She is a member of the Scientific Committee for the Global Awards for Sustainable Architecture and an independent expert for Mies van der Rohe Award 2011. She is a lecturer and she also runs workshops in Europe and abroad but her current position is at the University of Ljubljana Faculty of Architecture.

Picture : Akrapovič (Slovenia).





PUBLIC LECTURES

Fabrizio Carola
Peter Gabrijelcic
Isabel Hérault
Spela Hudnik

STUDIO LECTURES

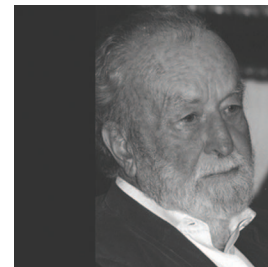
Edgar Pierterse
Alan Storey
Julian Cooke



Fabrizio Carola

Fabrizio Carola completed his architectural education at the University of Naples in 1961 and founded his own firm in 1963. His early projects were influenced by processes of prefabrication and the triumphs of industrialized society. From 1961-63 he worked as a planner in a rural Moroccan village and developed a vision for architecture heavily influenced by the African vernacular, Africa's landscape, climate and social conventions. He is the recipient of multiple awards including the Aga Khan Awards (1995), the Prize for Mediterranean Architecture (2005), and a Global Award for Sustainable Architecture (2008). In addition, he founded a Neapolitan organisation : Napoli Europa.

Picture : Hospital (Mali).





Peter Gabrijelcic

Peter Gabrijelcic finished his architectural studies at FAGG in 1973. He advocates the protection of the cultural landscape while his academic work has focussed on rural architecture and Slovenian villages. In 1982 he was elected president of the Association of Architects for the city of Ljubljana, and in '85 in Slovenia was awarded a prize for the Best Restoration of Wartime Architecture. From 1987-1994 he headed the department of architecture at FAGG, and in '88 received awards from the Preseren Fund and the Salona arhitekture v Beogradu. Currently he is a principal partner at Architekturo d.o.o. along with Peter Koren and is the dean of Univerza v Ljubljani, Fakulteta za Arhitekturo.



Edgar Pierterse

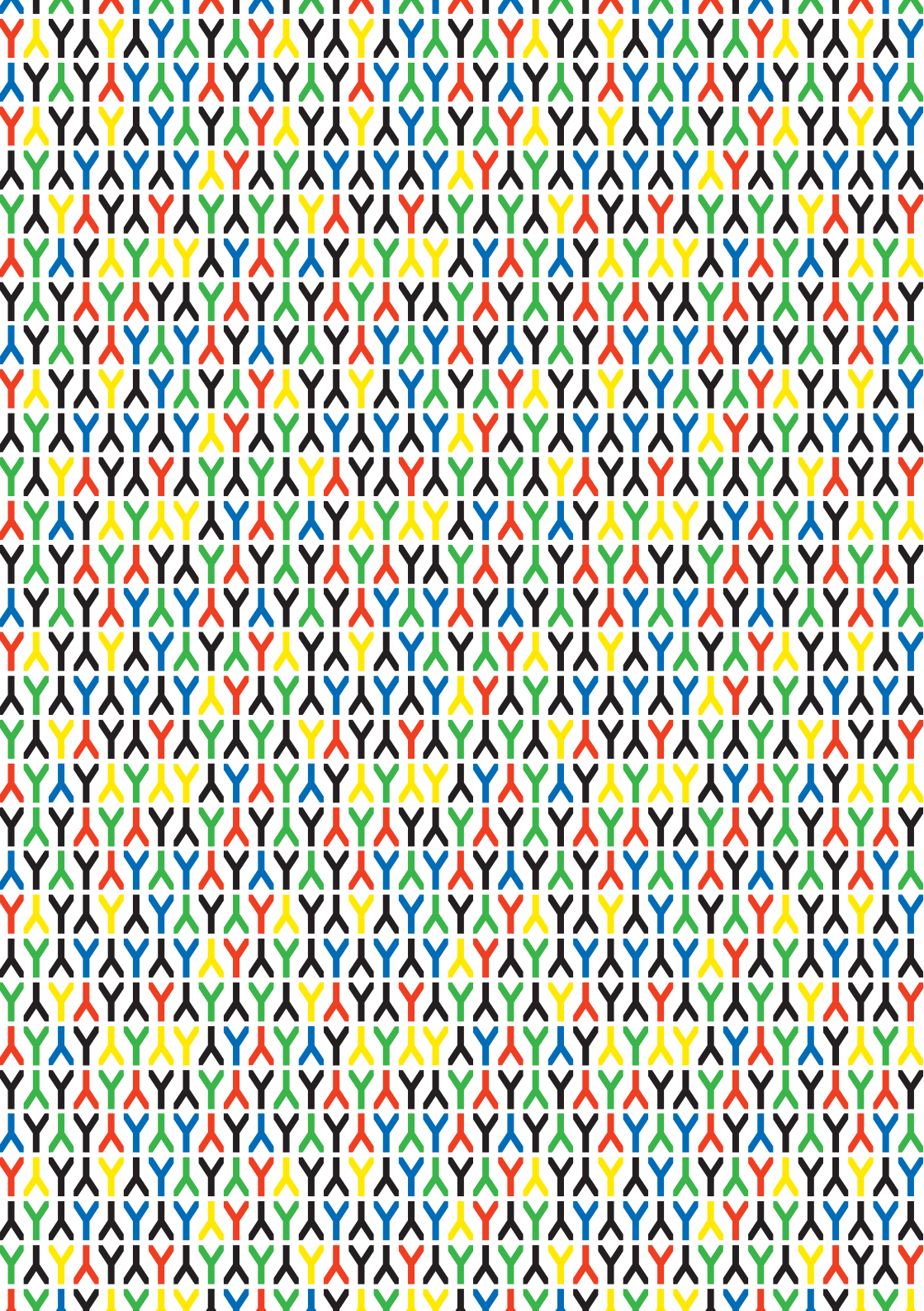
Edgar's research circles around various aspects of the city ; how to theorise it but also how to think about meaningful policy discourses and interventions to make the city more just, open and accessible for all who choose to make it a place of dwelling or a node in an ongoing journey. Concretely, his research interests are very broads but are structured around themes of Differential patterns of urbanisation ; African Urbanism ; Regional Development Policy & Planning ; Cultural planning & politics and visual representations of African urban condition in the documentary format allowing me to work across the theory/ practice and local/ global binaries.

Alan Storey

Alan specializes in facilitating Diversity Encounters, both within the Church and within other business and education institutions – healing the divisions that still divide us. Alan has served the Transnet Foundation as a Board member. He teaches widely throughout Southern Africa and abroad (including the Sudan and USA). Alan has an Honours Degree in Theology and a Masters in Philosophy (Applied Ethics in Economics).

Julian Cooke

Julian headed the Architecture programmes at the School of Architecture and Planning between 1996 and 2000, and has been dean, director, professor, and associate professor over a period of 24 years of association with the school. Julian is a partner in the firm Architects Associated (previously van der Riet and Cooke) and earlier practised as senior architect/ planner, Rand Mines Properties Ltd and as partner in the firm Fleming and architecture with teaching and critical practice with a specific concern for social projects such as refurbishment of hostels.



WORKS

Zip
More than air
No boundaries
Table town
Light giving life
Interlace
Inter-linking



ZIP

Andrea Michels Bristo (Brasil)
Ashley Baker (South Africa)
Eustace Adonis (South Africa)
Evelyn Gyasi (Ghana)
Katja Vidic (Slovenia)
Rickus Bruwer (South Africa)



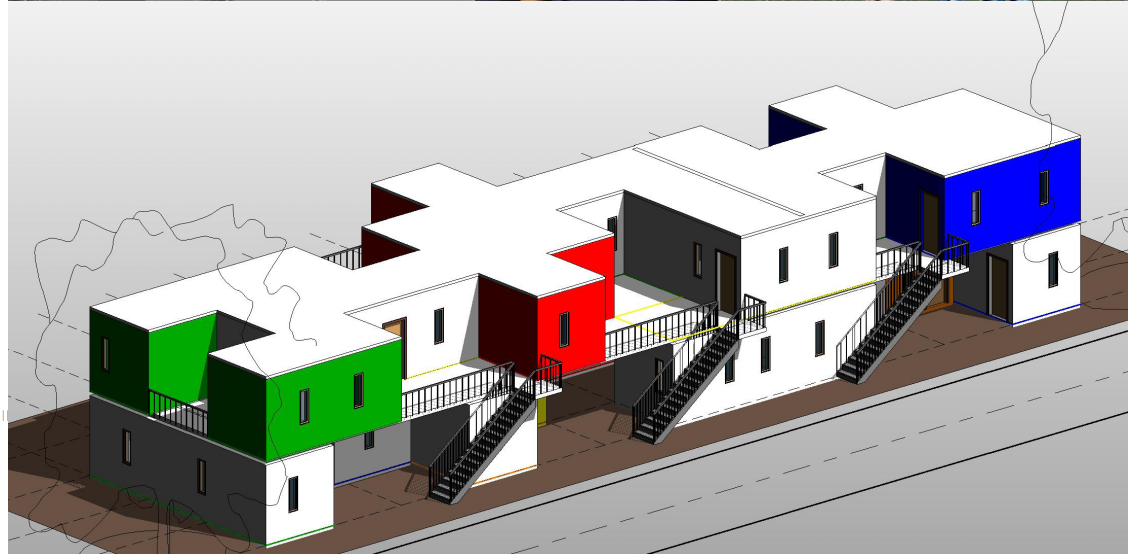
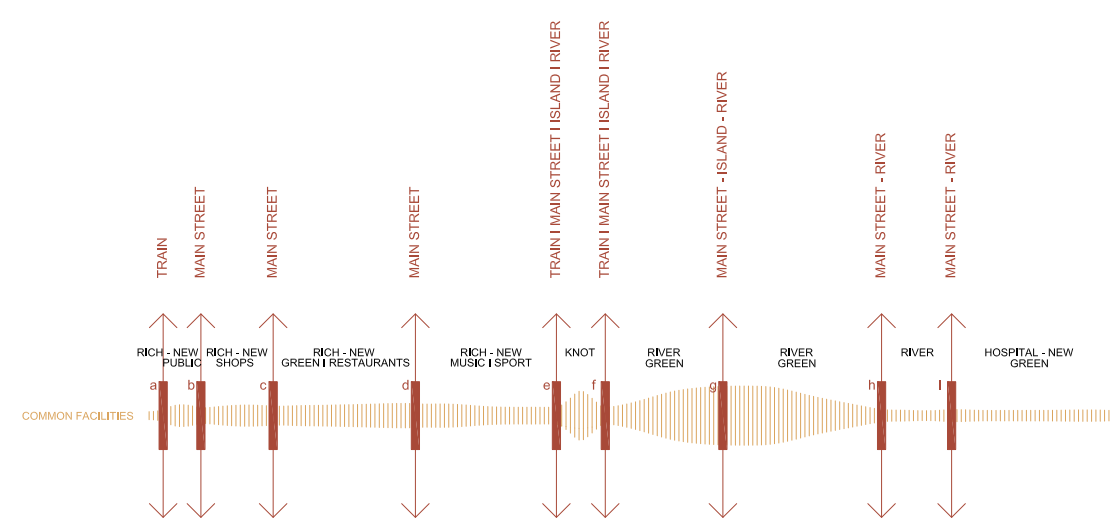
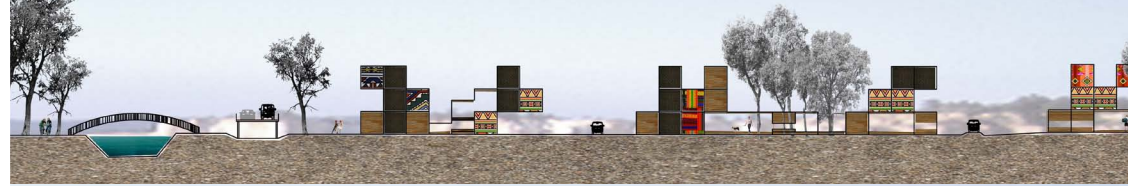
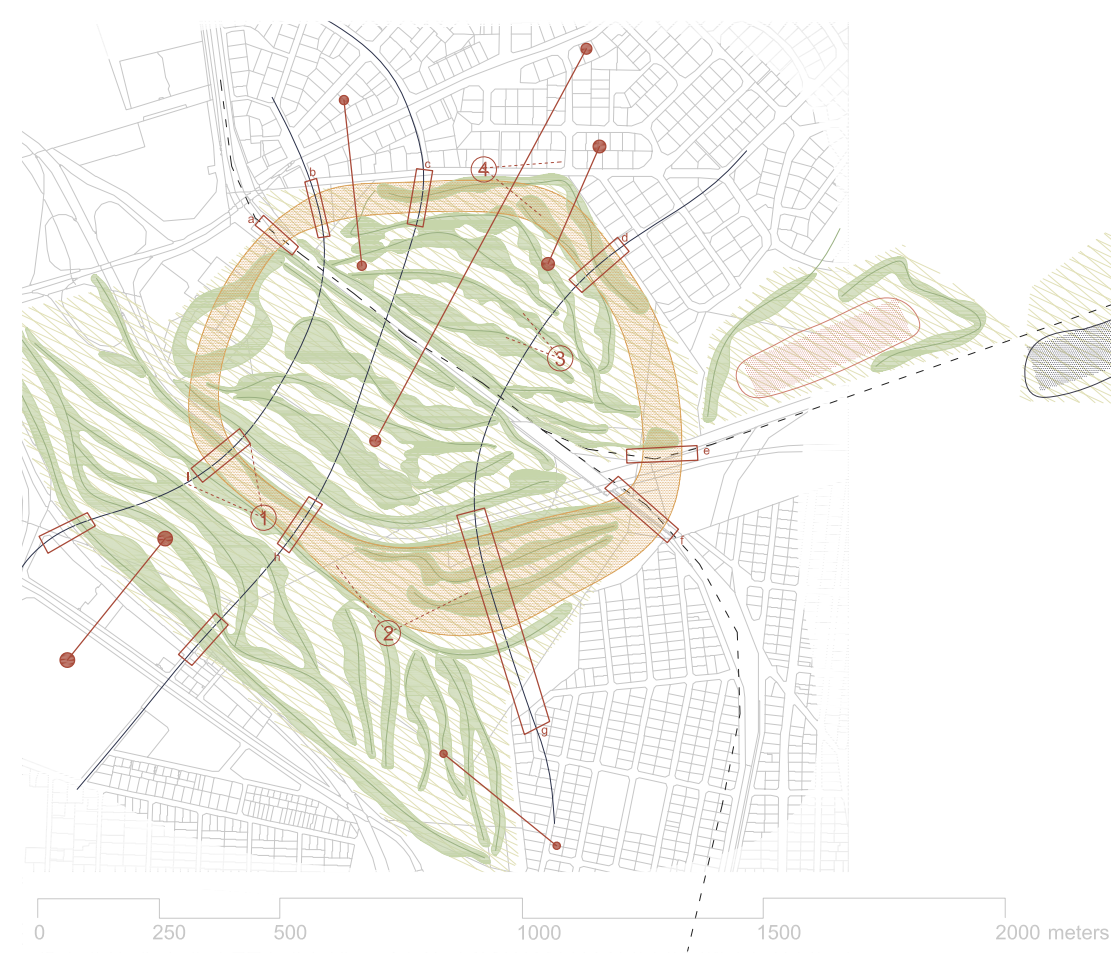
WORK – LIVE – PLAY. The initial objective was to create a space where live, work and play could coexist forming a cycle of subsistence.

ZIP. The concept of zipping is to create a “common facility circle” around the new area to integrate with the surrounding neighbourhood. Thinking the space as a whole, as a way to integrate the nearby areas. Zebra means coexistence.

BRIDGING THE DIVIDE. Bridging the divide between culture, classes, communities, ethnic groups, languages and people. By creation of the zip, which is an overlap and integration of people to create community, the visuals «bridges» will connect the divided portions and help bridging metaphorically the separate mind set. The zip between existing community and new development is a lively space rich with sound, music and movement. It will encourage people to integrate, interviewing the old and the new.

THE RIVER . Cycle paths and green belts along river, with mixed use buildings. Water taxis on Liesbeeck river and restaurants and shops living out onto public space. The streets and developed housing is placed around existing trees on site. Green belts all along the back of the buildings creating a communal zip between dwellings. A space where people can cycle, meet, relax and share culture.

BUILDINGS LAYOUT. A modulation in a ratio of 1:3 is designed for buildings, allowing great flexibility, whether material, (containers, concrete, bricks, wood, etc), dimensions, and different configurations, one or more levels, according to the needs. The modulation increases the expansion facilities, costs and adaptation of the uses.





MORE THAN AIR

Pauline Marie d'Avigneau (France)
Paola Figueroa (Colombia)
Cristian Luijk (South Africa)
Matjia Kovac (Slovenia)
Moghomotsi Thekiso (Botswana)
Tom Verstraete (Belgium)



«More than air» takes its own name from a graffiti posted in a street in Khayelitsha, one of the biggest township in Cape Town. We understand the word «air» as the basic element for survival. The current living conditions in these informal settlements are on the very edge of survival. So we want to provide a new urban area which offers more than just «survival».

The project gathers all the significant elements found in the manner of living in townships, such as the people and their practices, the meeting areas, the local commerce and the relationship with the nature.

First starts the idea of recycling. Taking advantage of the existing tools, the housing project is made out of the harbor's wasted containers. First, we pick the abandoned containers coming from the harbor, then, we bring it to the local industry building renovated on the site, and finally, we reused the clean ones to build the new housing constructions. This hand work generates new employments to the citizens.

Thinking about how a city should be and not just how we should build another residential area, the project lift up from the ground, breaking the regular model of horizontal housing and set them in a vertical way which allows the conception of new public's spaces, increasing the density. This new model remains into the limits of the local scale, in order to let people interact directly from the private side over the public as they always do.

On top of the traditional one floor construction, the containers can be set in different ways, based on a system that allows the residents to adapt their houses according to their needs. The refurbished containers must only provide the basic amenities. Further, adaptation can then, be made by the residents to create a unique product which is never finished. When a whole lot of containers are stacked, it can portrays the different cultures and generates appropriation and integration.

This «half-half» system between professionals and inhabitants permits to involve the community into the building process, making them an important part of the entire project.

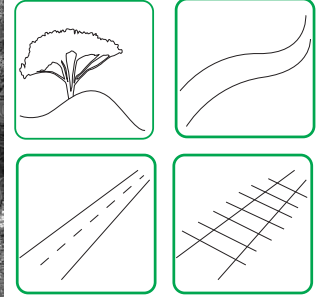
STEP 1
WE DON'T WANT



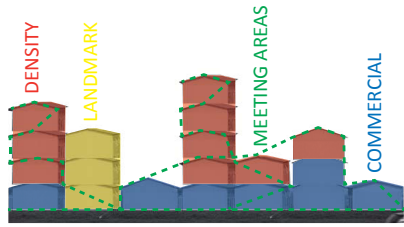
CLOSED RESIDENTIAL AREA



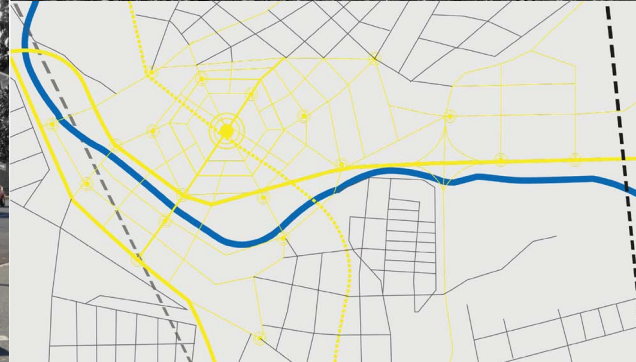
STEP 1
EXISTING AREA



STEP 2
WE WANT

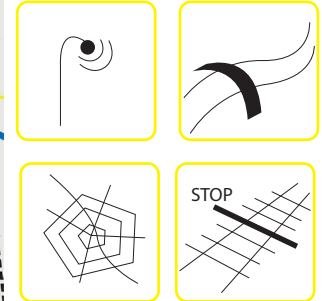


CITY TYPOLOGY



STEP 2

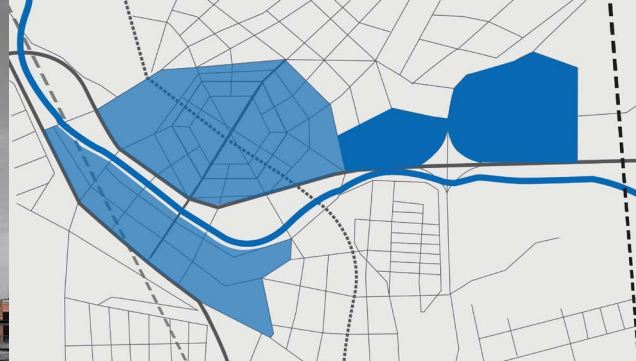
PUBLIC INFRASTRUCTURE



STEP 3
WE USE

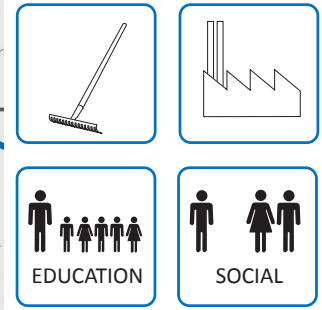


RECYCLE PROCESS

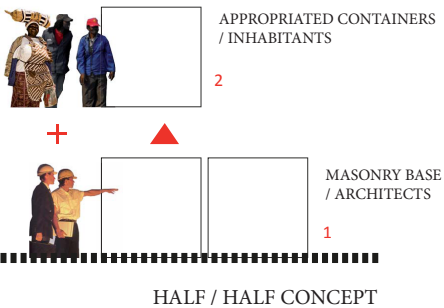


STEP 3

COMMERCE-INDUSTRY-AGRICULTURE



STEP 4
WE EXCHANGE



HALF / HALF CONCEPT



STEP 4
HOUSING



CONCEPT OF NEW LIVING, OFFERING JOBS,
GREEN AREA, PUBLIC SPACES AND HOUSING :
MORE THAN SURVIVAL

MORE THAN AIR

PEOPLE HOUSING FAMILY

MEETING PUBLIC SPACES

VEGETATION TREES PLANTS

LOCAL BUSINESS COMMERCE





NO BOUNDARIES

Anna Mallac-Sim (France / Mauritius)
Blaz Salamon (Slovenia)
François Retief (Namibia / South Africa)
Johan Basson (South Africa)
Jovan Geldenhuys (South Africa)
Juan Martin (Ireland)

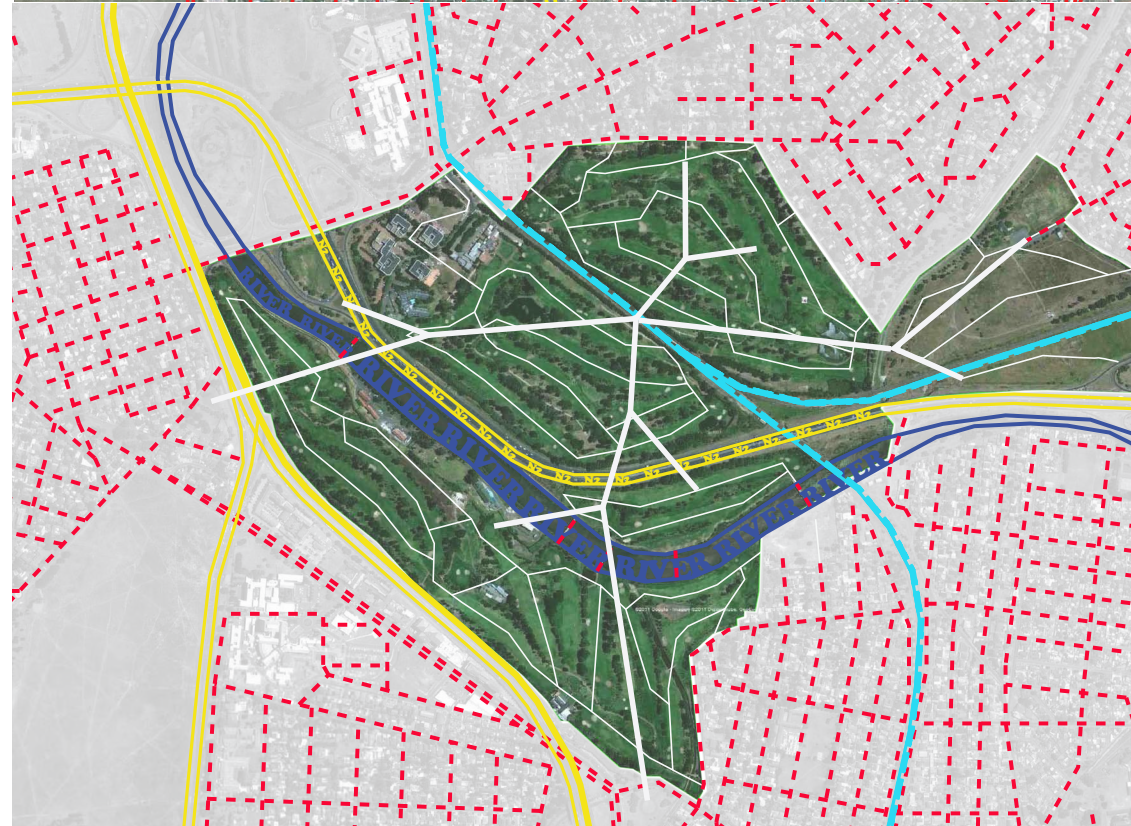
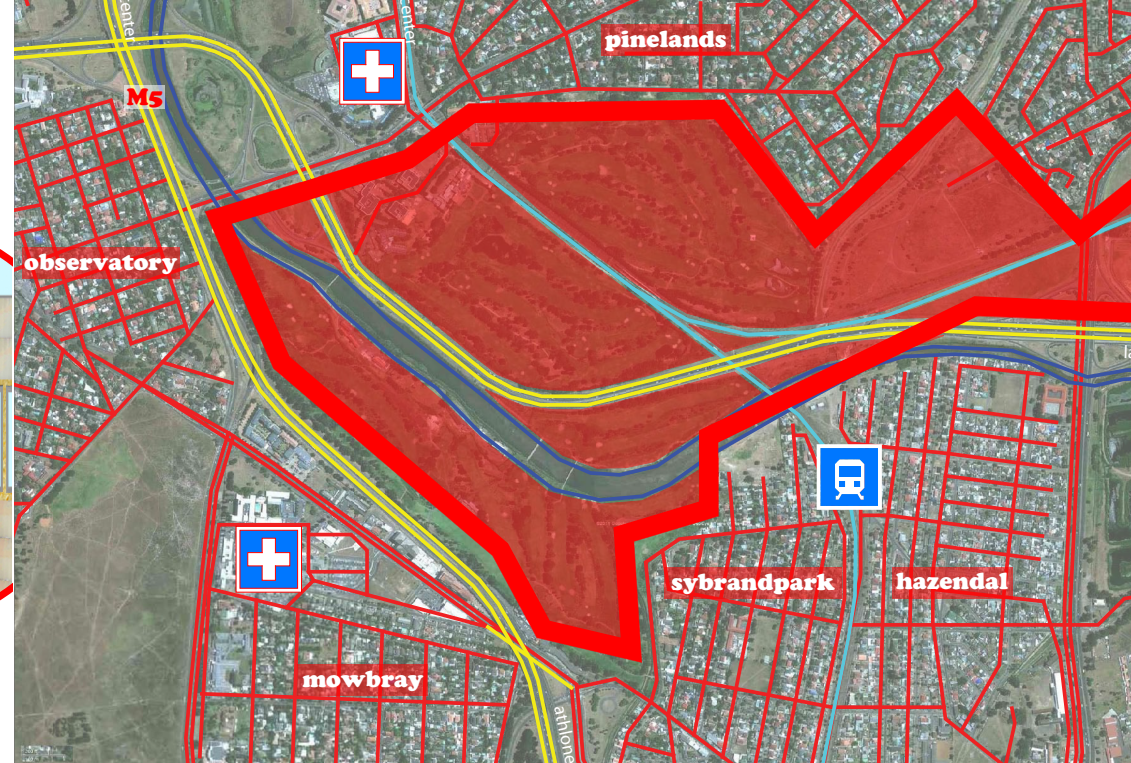
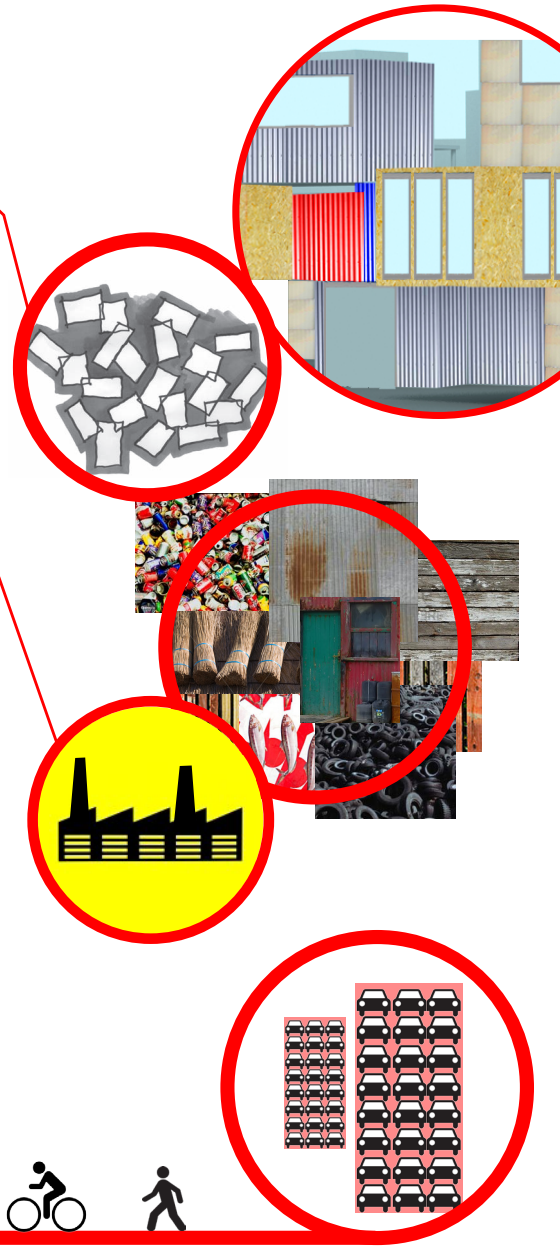
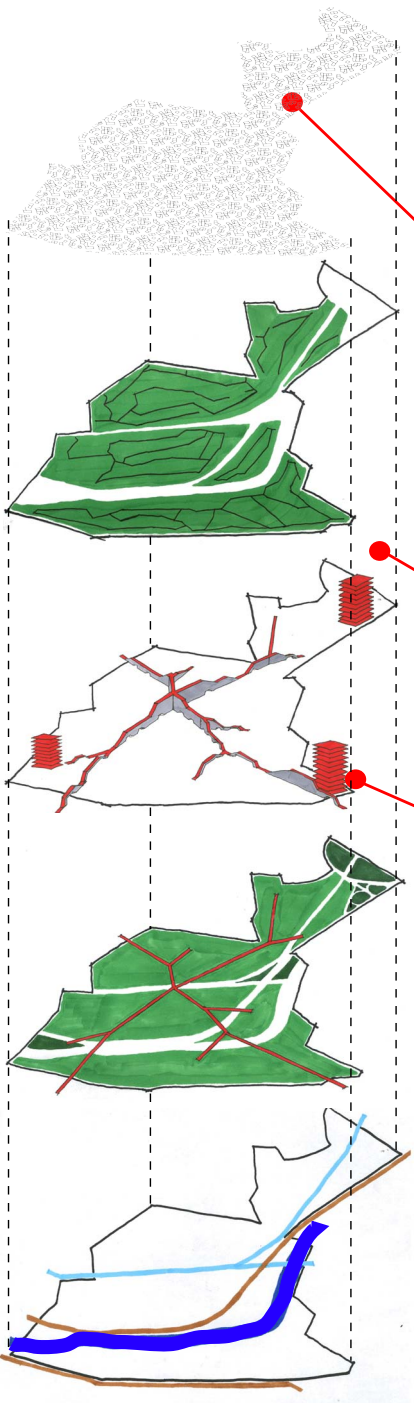


Imagine a “piece of town in town” for people spatially excluded from the City, away from the place where everything happens. This project exists to prevent spatial segregation and rethink the solutions for South African cities’ extensions.

It is because townships and housing programs are sprawling, because cities have no limit that people lands up totally disconnected and expelled. This project takes an interest in analyzing and locating the barriers of a possible integration in order to make them becoming the place and the elements of integration. It is about reconverting borders in an invisible, porous limit, which will make the connection between the new suburb and its surrounding. The site itself is interrupted by internal frontiers (the railway, the motorway, the river) and spatial organization of circulations around.

The first action is to stitch new roads with the existing ones and create in the area a new station. The railway is no more a boundary but now a strategic point as a place of meetings and connection to the City. Motorway and river are transgressed by a pedestrian realm that structures the all area, hosts facilities considering those located in the suburbs nearby and bring a new lifestyle. A district without cars is somehow more egalitarian. Big tours of parking are located at the extremities of the new suburb as a signal, a symbol. Still considering the existing, the district plan follows the layout of the present trees on the site to preserve nature in the urban space and in order to break away the usual geometric layout, make it lively. The void spaces between the ranges of trees becoming the roads and the vegetal spaces, housing.

Learning from the townships, the project trusts in the quality of informal spaces such as in-between spaces that appear only if the city planner disappears in favor of the residents, place of encounters, shared spaces, even tiny gardens. Therefore, the new suburb provides simple infrastructures and basic facilities as running water and electricity developed and embellished by the inhabitants themselves. Towns become a space impossible to predict, made of residents’ needs, desires and dreams.



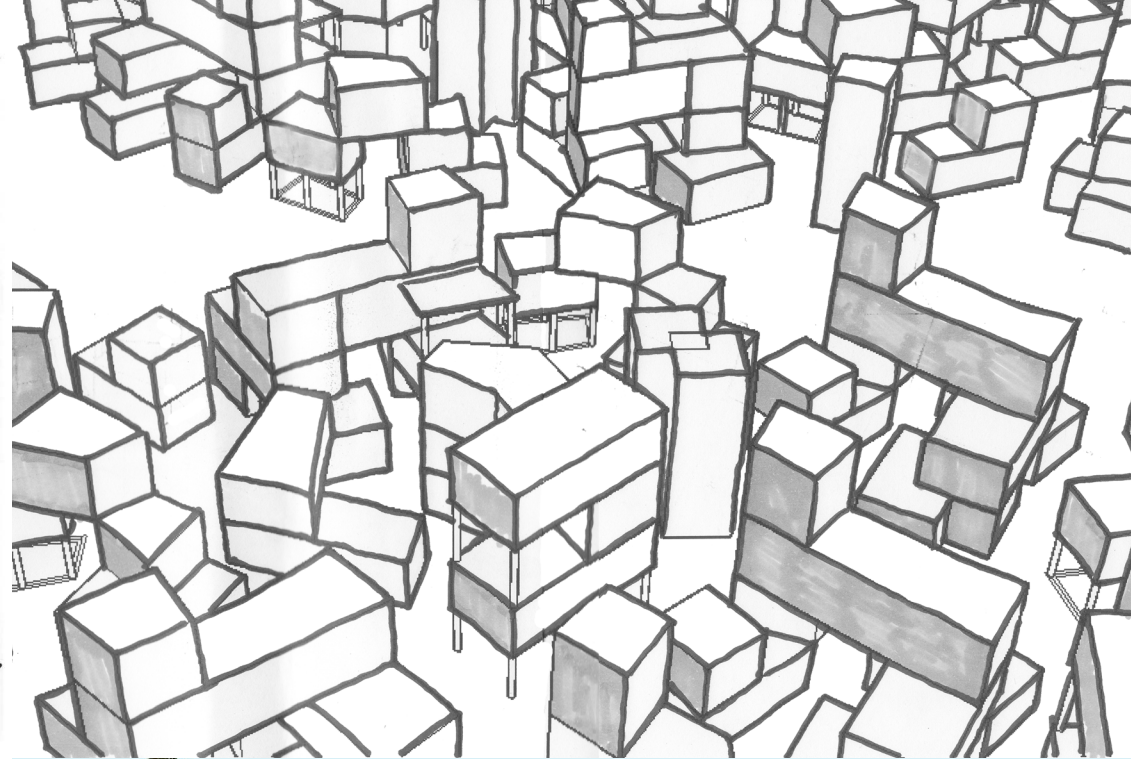




TABLE TOWN

Bastien Bry (France)
Edwan Coetzee (South Africa)
Daniel Conradie (South Africa)
Gabiella Martin (South Africa)
Mojca Cresnik (Slovenia)
Abbas Janadinia (Iran / South Africa)



Our site, the Pinelands and Mawbrey golf courses located near Cape Town center is using quite a wide area of land. But the thing is that it is a enclosed place which you cannot easily access.

In order to design a huge urban scale project to house 300 000 inhabitants as a realistic and sustainable project, we have to keep in mind both the low investments we can get and the wilderness and beauty of this site.

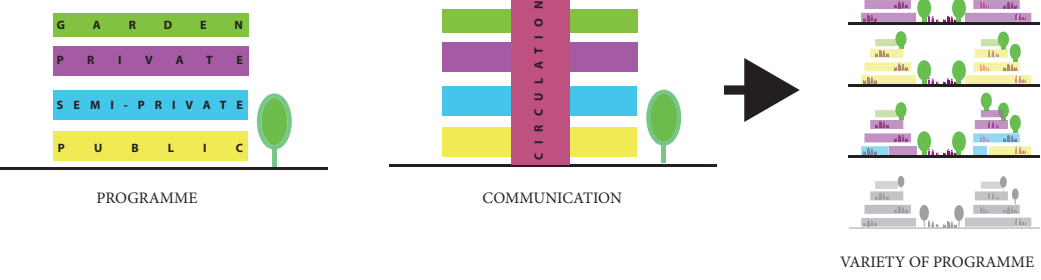
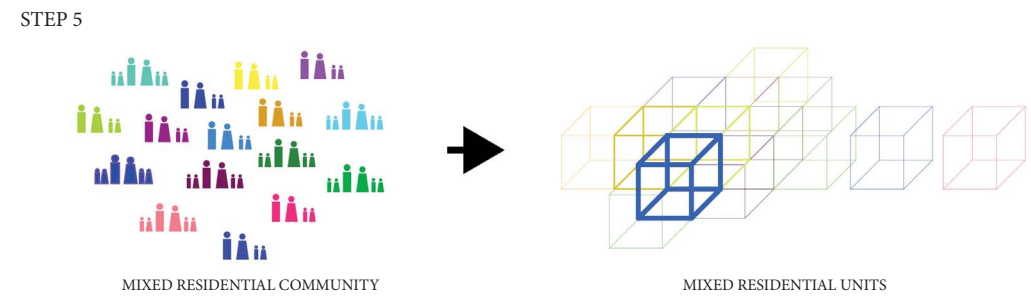
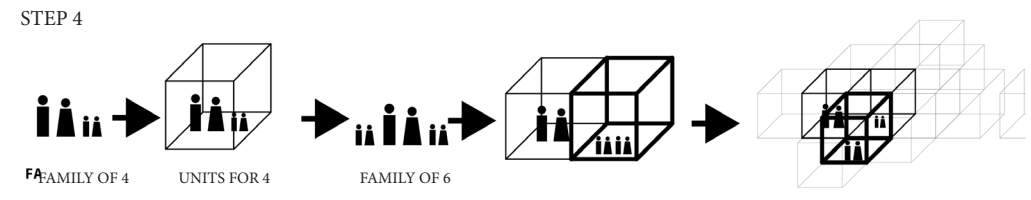
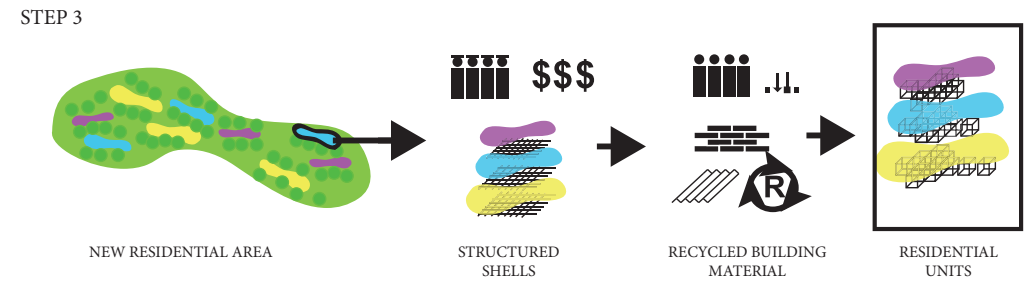
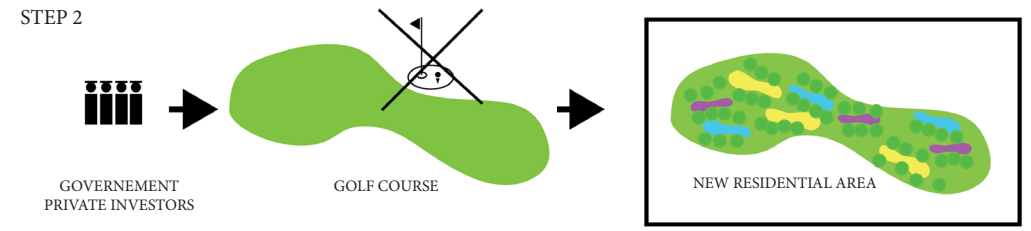
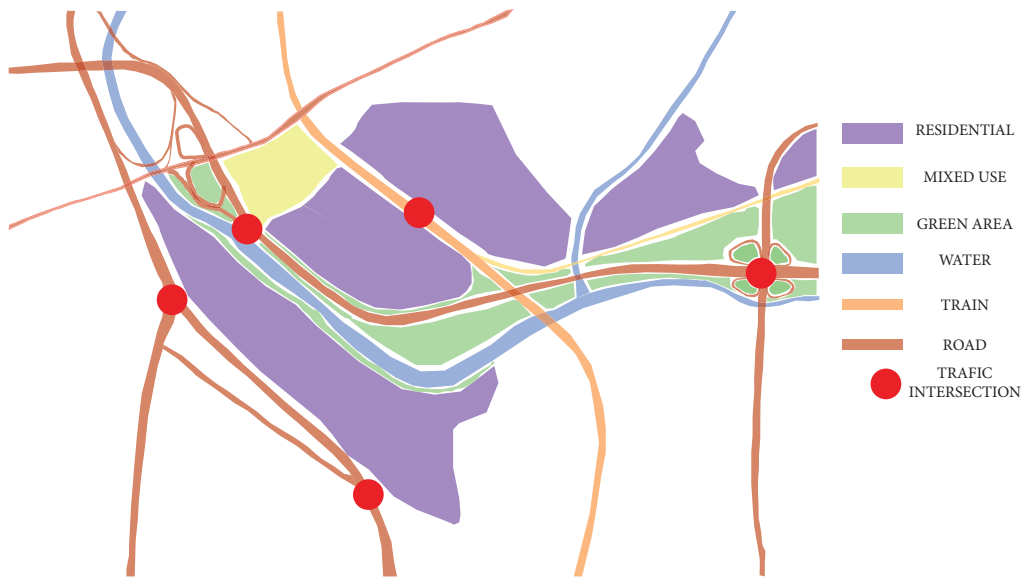
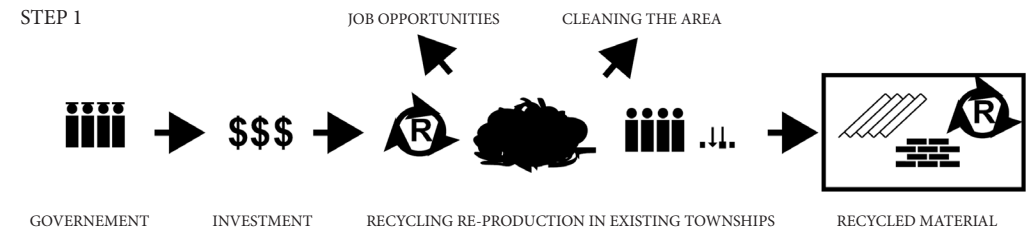
The design process

We also keep in mind the great ability of the people living inside the townships to create, build and make informal business activities on their own. Therefore, the first step is giving them a basic structure with water and electric facilities that they will afterwards carry on building.

Back to the sustainability concerns, the urban planning comes from sparing all the trees : the areas where the trees stood on the courses sides become the public spaces, so the idea is to only build on fairways. The rooftop is designed as a public garden in order to help people farming their own food for free and in a holistic sharing spirit.

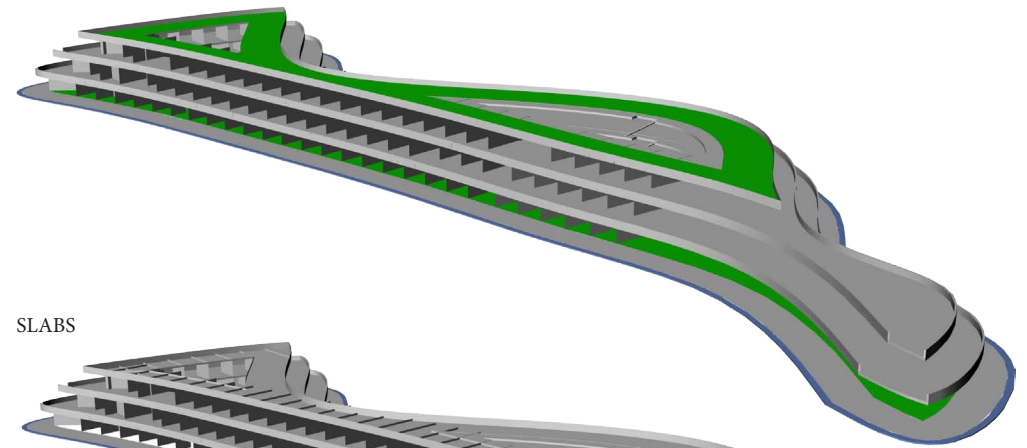
In a few words, the aim is to make a lively, cheap, involving, gathering, sustainable, green, efficient, comfortable, aesthetic, frontier-breaking housing project, thought at a large scale, for people who really deserve it !

TABLE TOWN CONCEPT

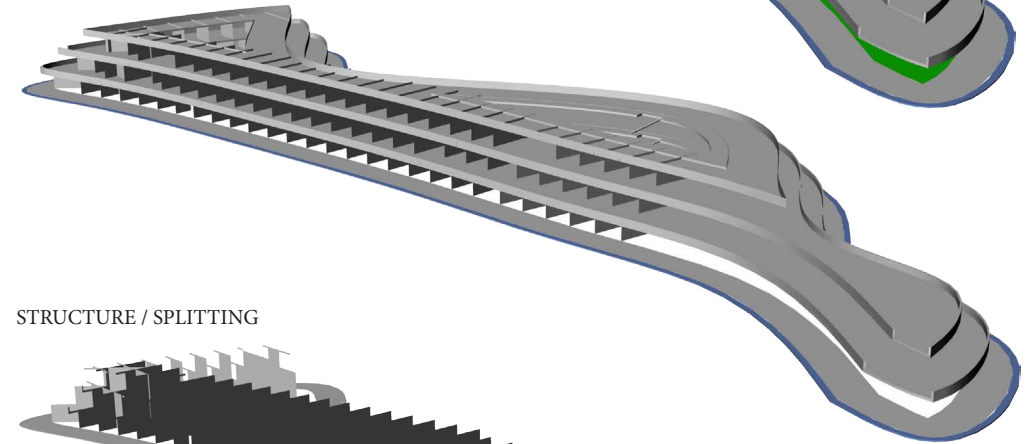




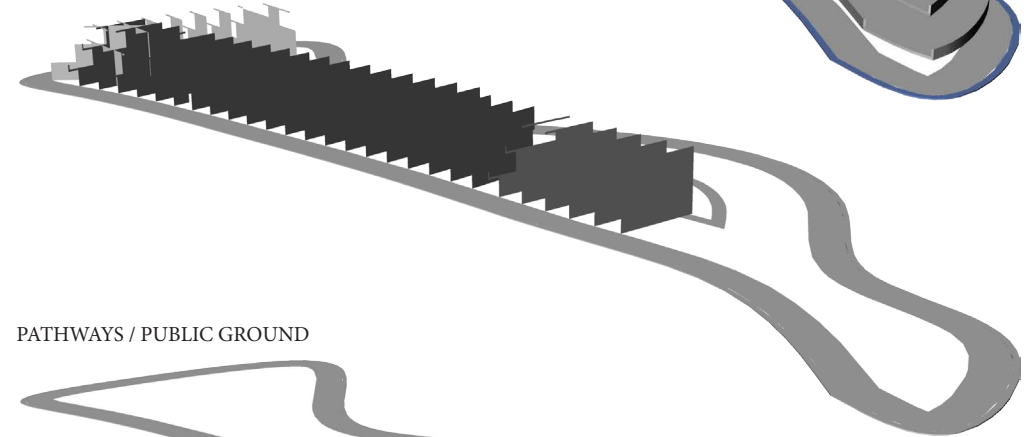
PUBLIC ROOFTOP GARDEN



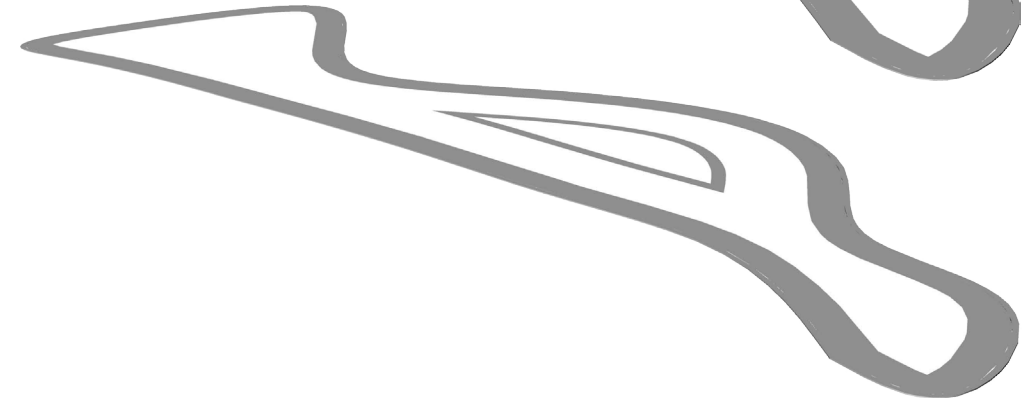
SLABS



STRUCTURE / SPLITTING



PATHWAYS / PUBLIC GROUND





LIGHT GIVING LIFE

Amanta Rabe (South Africa)
Fethi Diabi (Algeria)
Helmut Orffer (South Africa)
Manja Bergant (Slovenia)
Roan Hugo (South Africa)
Sajjaad Soeker (South Africa)

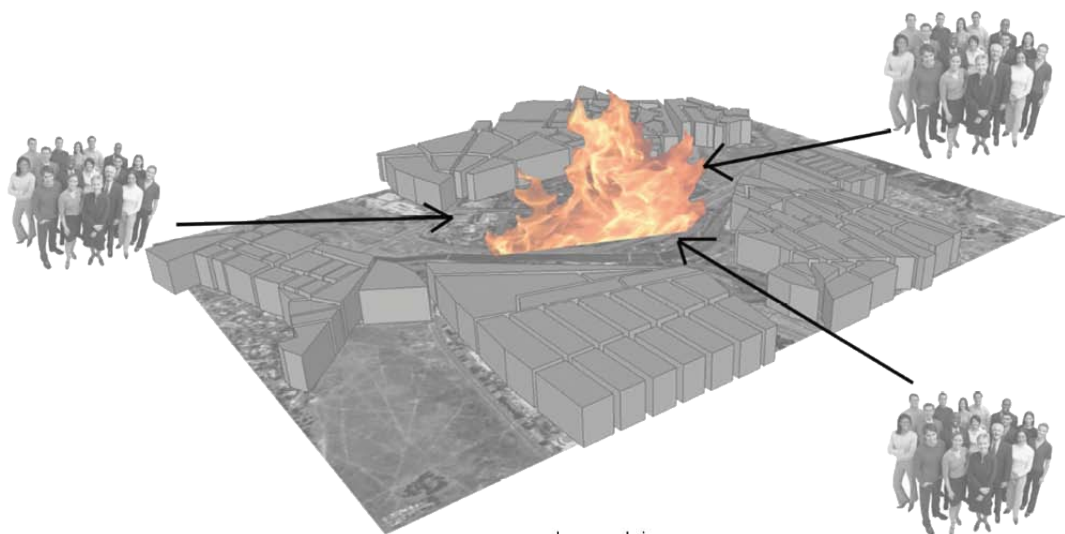


Being the primary source of energy in the townships, fire meets the different needs of their inhabitants and continues to perpetuate ancient rituals as gathering around to warm up and strengthening social ties. The project tries to recreate this image of social life generator through the public, semi-private and private gathering places, that reveal the frontiers of integration. That is to say a «fire» for each scale.

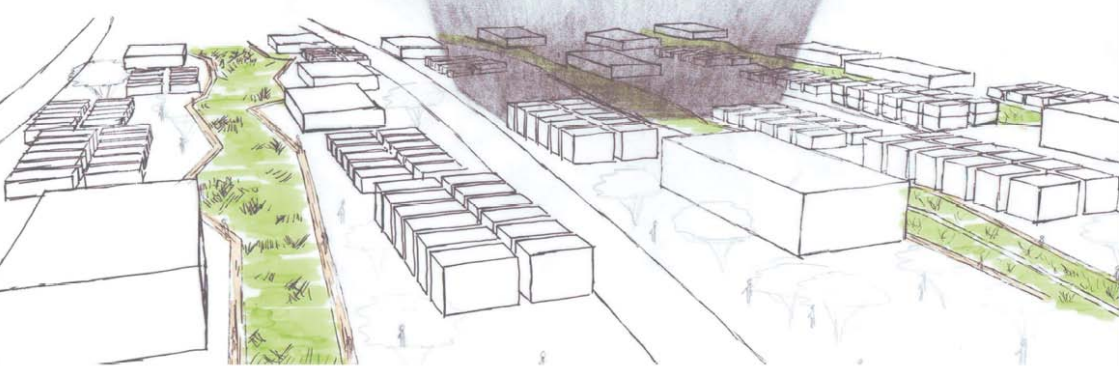
The new district will take place around a large central park representing the great fire, which will generate through funny activities, the social mix between newcomers and old residents.

The physical connection with the other districts will respect existing frames, and the connection between them will generate a new and fluid working matrix, that will give birth to our new district. Other smaller meeting places (jobs, shops, services etc) will be created around this park to offer a certain balance between its different parts. Going further into this concept, social spaces will be created in new types of habitations, specifically terraces generated by a set volume. This typology is very flexible and meets the needs of the families with a possibility of future horizontal and vertical extensions.

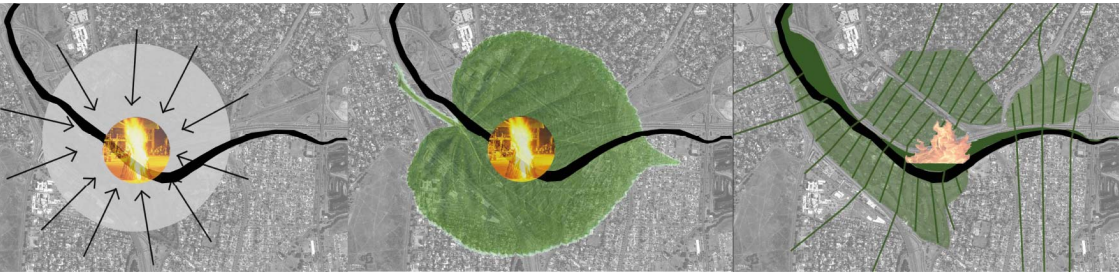
The area is totally covered by public transportations : bus and train. Those stations are connected to smoother transportation means through the city to allow non-resident employees to reach new employment centres. For newcomers, the low level of qualification has led us to focus on the integration of urban agriculture that will have a great impact on their profits, but also generates employment and helps domestic consumption. Besides the economical and social dimension, the historical dimension has played a role in this choice, by returning the robbed lands to those who were dispossessed. This agriculture is irrigated by the canal that runs through the site, reinforced by the rainwater harvesting.



education
work
socializing
relaxation
sustainability
safety
economic
culture
pedestrian links
gathering by the river



ATTRACTION COMBINING THE BASIC ELEMENTS GREEN SYSTEM



INFRASTRUCTURE



- NEW INFRASTRUCTURE
 - NEW ROADS FOR PUBLIC BUS SYSTEM
 - ACCESS TO DWELLINGS

PROPOSED LAYOUTS



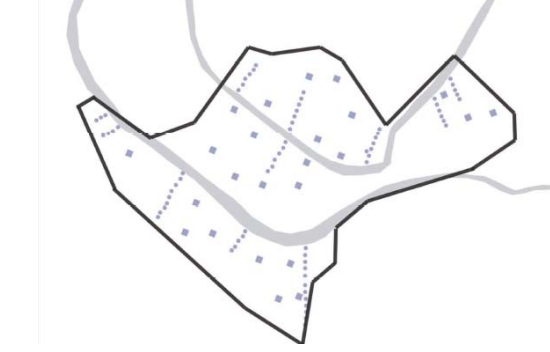
- PUBLIC FACILITIES
- PROPOSED DWELLINGS
- TEMPORARY PAVILIONS
 - AS AN OPEN LIBRARY
 - AS A PLACE FOR SOCIALIZING

GREEN SYSTEM

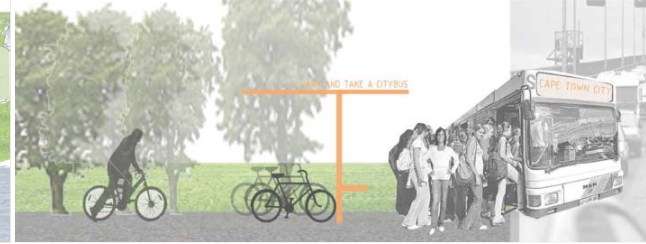


- PUBLIC OPEN SPACE
 - PARK ALONG THE RIVER
 - FOOT PATHS BETWEEN THE BUILDINGS
- SEMI PUBLIC OPEN SPACE
- PRIVATE OPEN SPACE
- AGRICULTURE

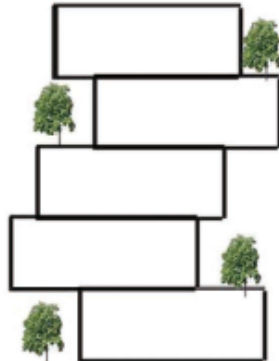
WATER SYSTEM



- EXISTING WATER
 - RIVER
 - CANAL
- PROPOSED WATER SYSTEM
 - RAIN WATER HARVESTING
 - IRRIGATION SYSTEM



- PROPOSED DWELLINGS
- PUBLIC FACILITIES
- TEMPORARY PAVILIONS
- AGRICULTURE
- WATER SYSTEM
- GREEN SYSTEM
- INFRASTRUCTURE





INTERLACE

Javier Kerii (South Africa)

Maria Salazar (Colombia)

Nicole Dinis (Mozambique / South Africa)

Spela Glavac (Slovenia)

T'shana Denman (South Africa)

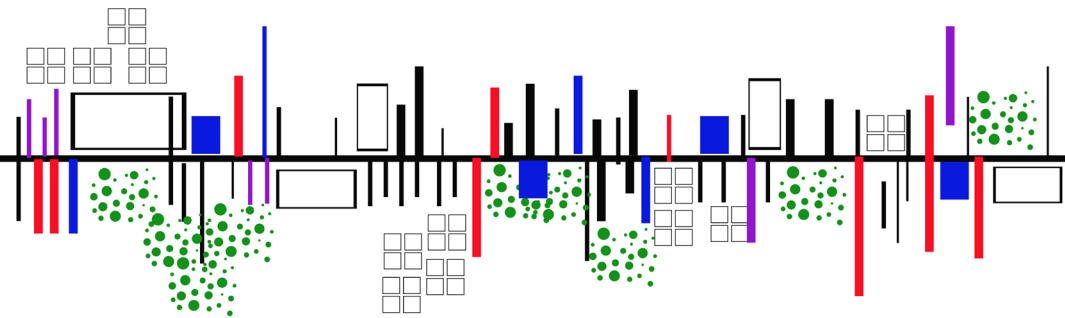
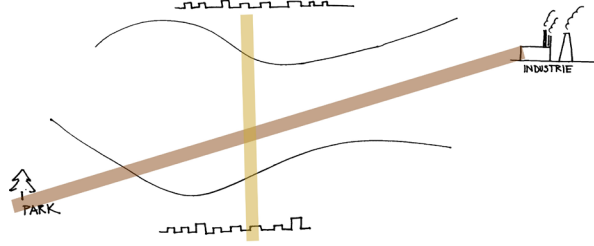
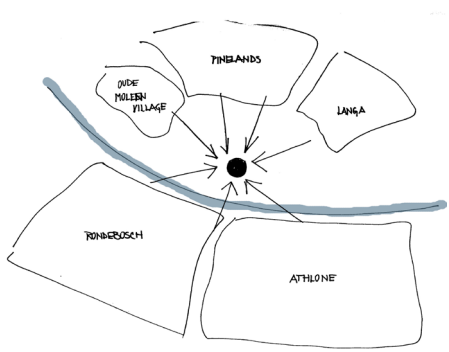
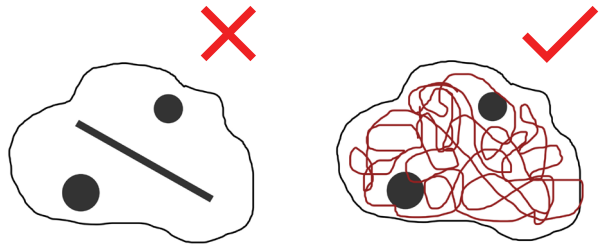
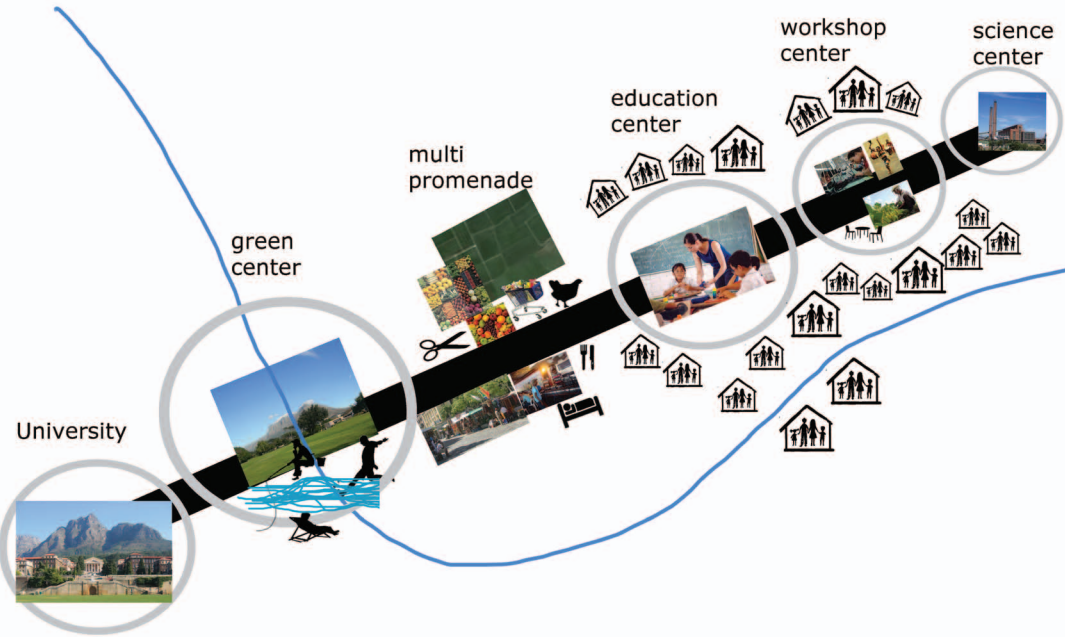


The areas surrounding the Mowbray golf course turn their backs on each other. There is no sense of connection or link. Each is socially and economically different, and it is difficult to imagine them as a whole. Before any housing proposal could take place, we had to consider ways in which to create links between the suburbs; links that crisscross like threads in a lace. These threads consist of two main axis running north to south and east to west, connecting the different areas and providing a number of activities along them, such as work places, supermarkets, agricultural allotments, entertainment, hotel, housing, galleries and open spaces.

By means of a promenade along the Lisbeek river, and a commercial block along the train line, the axes take into account the existing access roads and facilities, providing clear interconnections and giving people different options for their journeys. The mixed facilities along the promenade and the axis will bring residents together, reinforce the community and discourage car use.

Balance will be achieved between the various types of facilities, be they commercial, educational, health or places of worship. Mixed-use blocks will be introduced, which combine commercial and residential housing and enables activities to extend beyond the usual daytime office and shopping hours. The proposed new underground will encourage the use of public transport and attract people to the area.

A defined edge will be created along the northern part of the site, by means of a series of higher density buildings. People from surrounding neighbourhoods will filter into the new development; they will be lured by the series of dynamic urban axes.



- WORKSHOP
- SHOP
- MARKET
- OTHERS ACTIVITIES
- AGRICULTURE
- OPEN SPACE

AGRICULTURE

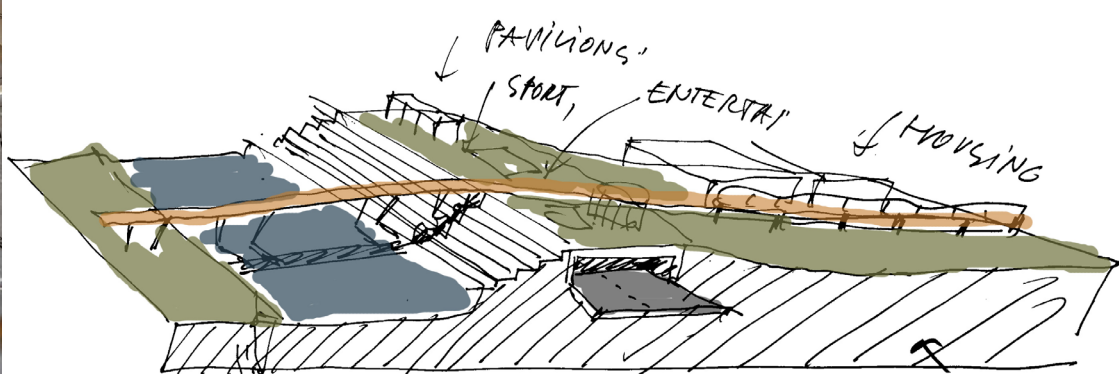
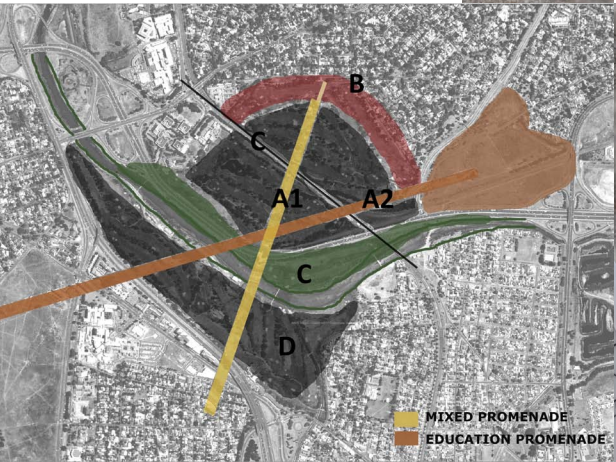
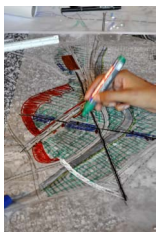
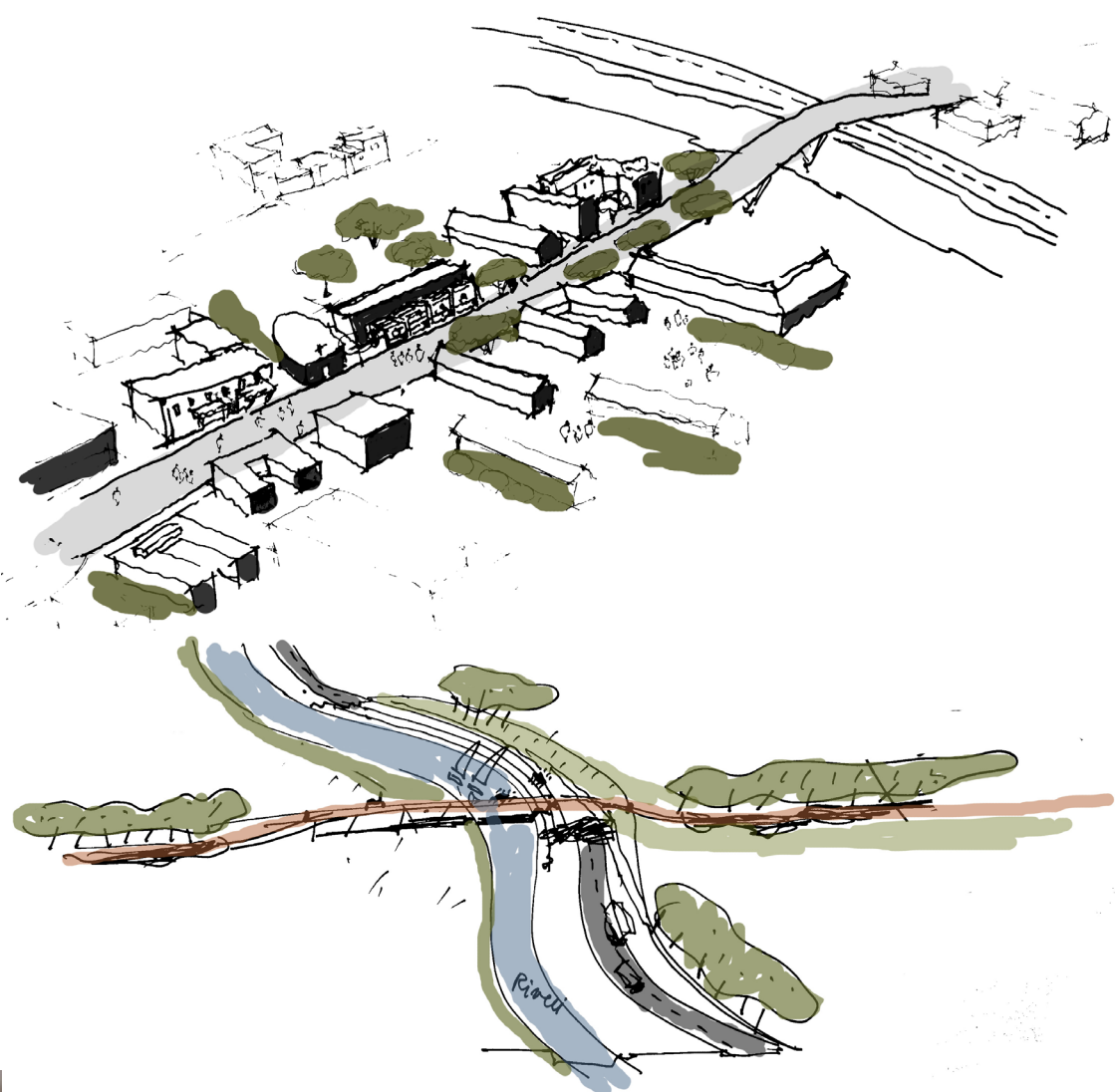
WORKSHOP

MUSIC

EDUCATION

WORK

EDUCATION





INTER-LINKING

Dale Smith (South Africa)

Lunga Marinana (South Africa)

Sana Oualha (Tunisia)

Tendai Gava (Zimbabwe)

Ursa Kalcic (Slovenia)

Sophia Saoudi (Algeria)



The site development is based on a programme whereby impoverished communities can develop both continual training systems whilst improving holistic living conditions. By engaging the community we further reinforce the growth patterns of the project to give a sense of ownership.

PROCESS. Materials will be sourced locally. Using the established community methodologies, in terms of collection and assembly, the process will be familiar to stakeholders within the communities. In line with these methods sponsors will be invited to contribute non-essential components such as timber off-cuts from manufacturers.

PHASES. The design process will carry out of number of years.

Phase 1 : the neighborhood will start from the node station. It will encompass the commercial segment of our design intervention; by initiating a work/build program the community will take ownership of not only the residential sector, but also the commercial and light industry sector.

Phase2 : will extend the “mix city” concept, by engaging directly with the existing neighborhood surrounds and furthermore it will enable a cross link of movement though a green corridor which links the existing Pinelands suburb through to the existing Rondebosch suburb. This in turn will reduce the demand for new facilities and amenities by granting access to health and education institutions through the corridor.

Phase 3 : will generate a complete community scheme, where the intervention becomes a new node linking previously detached neighborhoods through the sites. In addition, the 3rd phase will include a promenade development to complement the green corridor. This phase also caters for change in use of the previous work/build programme whereby skills developed can be disseminated to the incoming population.

CORRIDOR. The end result is a set of urbanization plan from analyzes traffic, green spaces and existing land use. The existing trees have defined the grid of the streets. Road system is organized to allow entry into neighborhood all sides. The use of the new neighborhood spaced an new center as a node for nearby area, achieving social mixity. New programs provide services and housing for people form the township and also from



PROCESS

T = 0



T = X



PROGRAMME



- RESIDENTIAL
- MIXTE
- COMMERCE
- GREEN ZONE

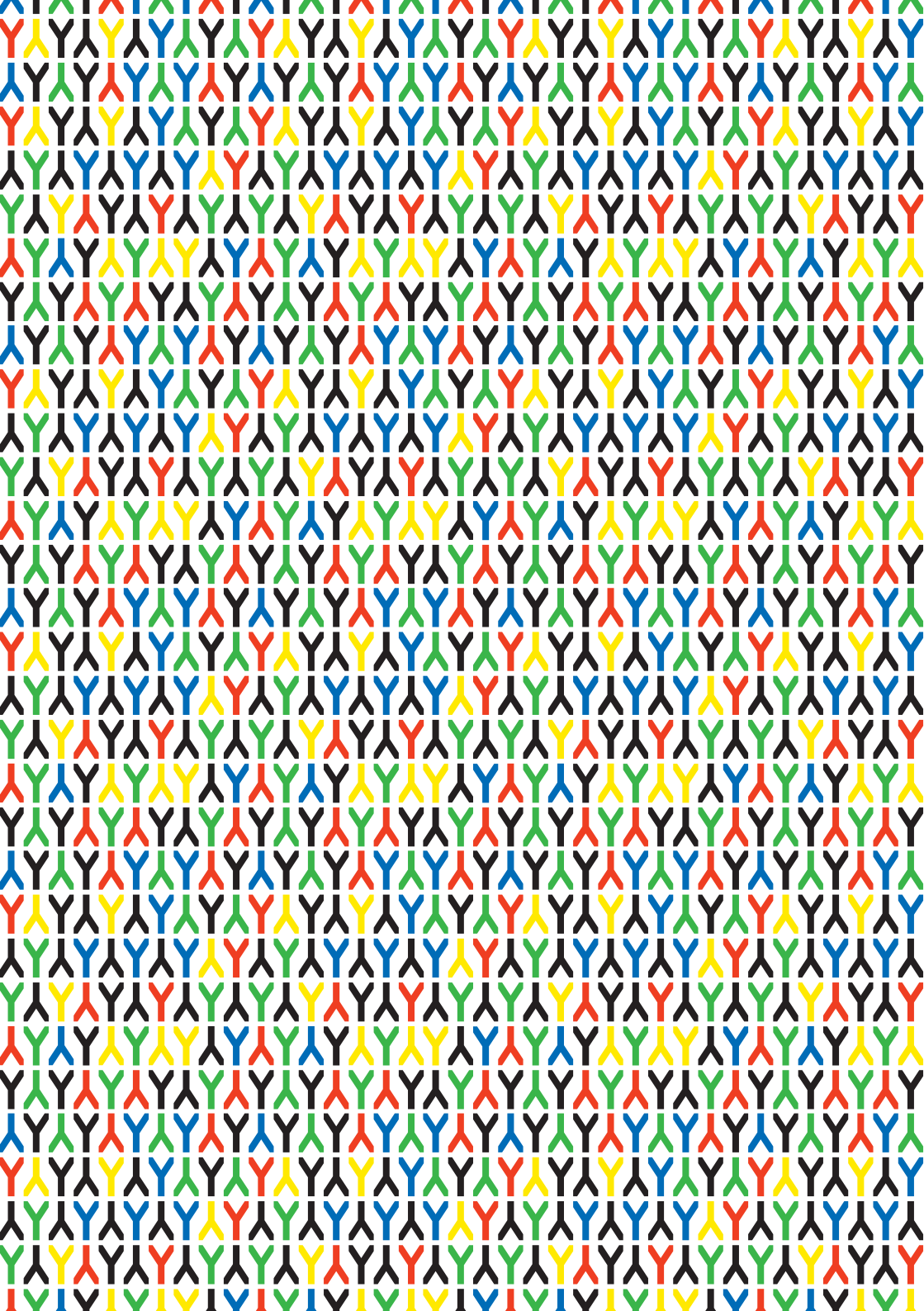


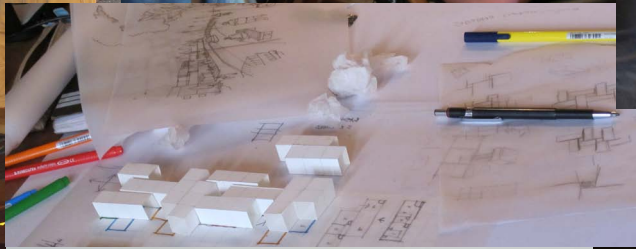
PHASE 1

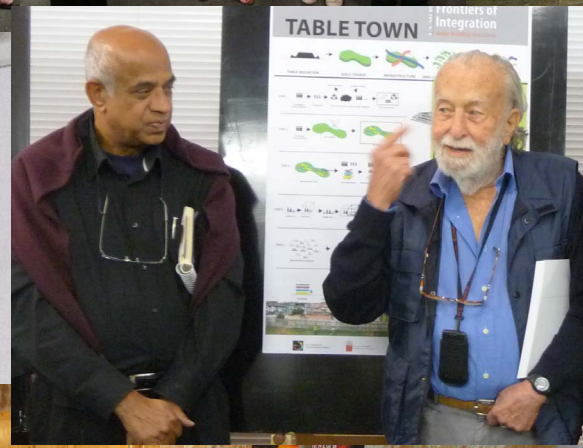
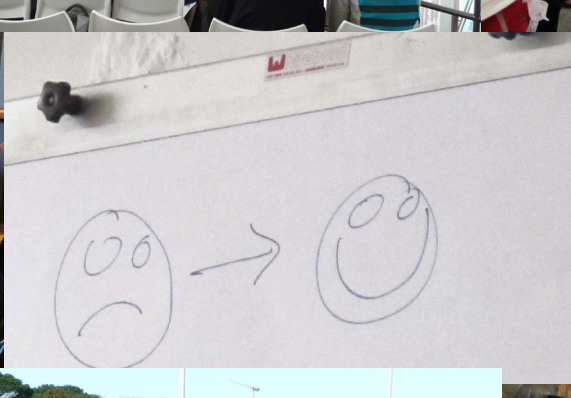
PHASE 2

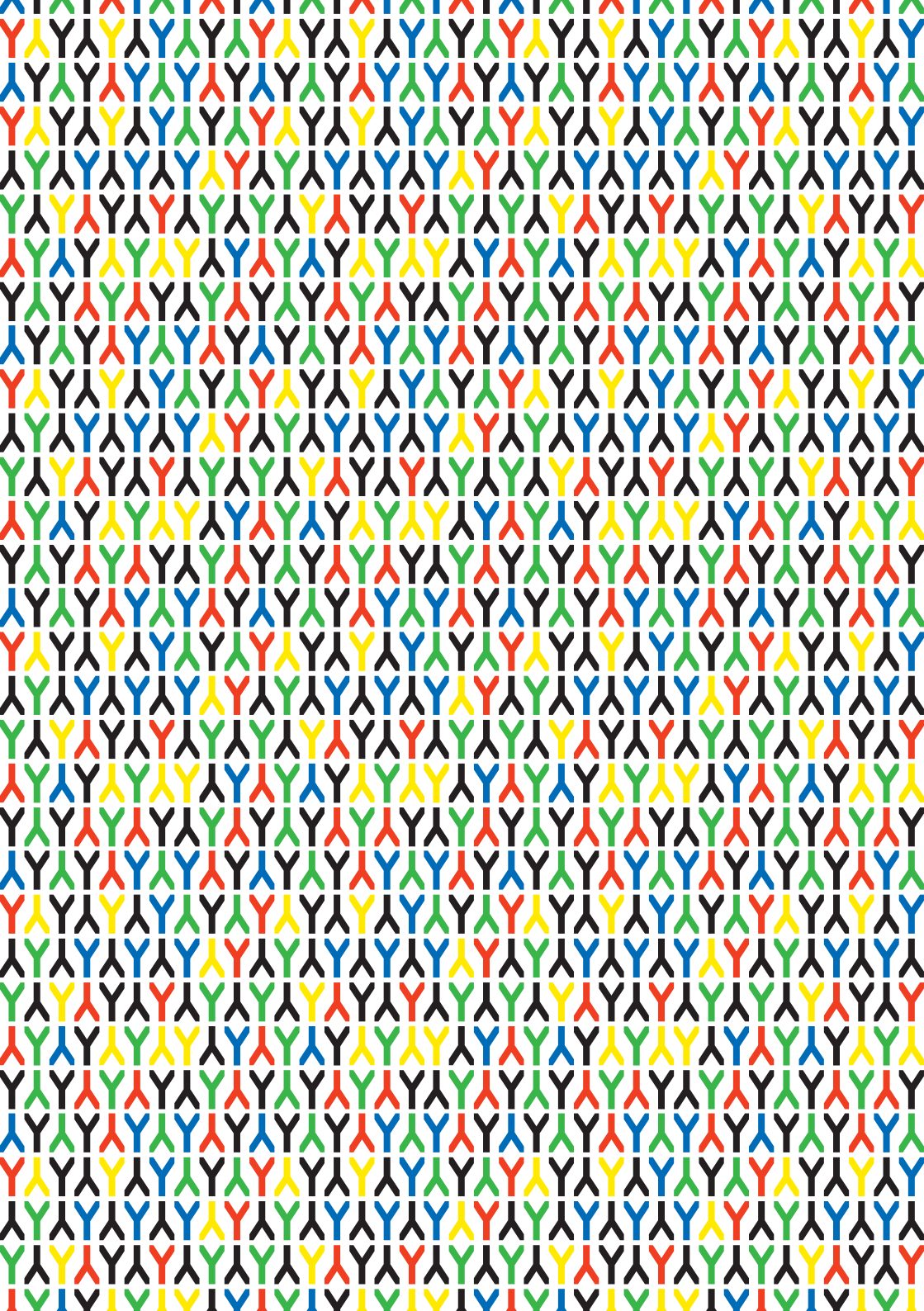
PHASE 3











INTEGRATION

Spela Hudnik

LINKING COHESION SOCIALIZING SHARING LIFE GATHERING MIXING
COMMUNITY INTERLINKING UNITE CITIZEN CONNECTING FREE-
DOM TOGETHERNESS INCORPORATION VARIANCE SOCIAL EQUAL
LOVE CHANCE HELLO INTRIGUE COEXISTENCE ZEBRA COLOR-
FUL CULTURE BEAUTIFUL RICHNESS RESPECT COMMUNICATION
NETWORK FRIENDSHIP PLAYING ZIP HANDS BOWL FUTURE ENGLISH
MUSIC.

(Integration of a New Generation)

I have fought against white domination and I have fought against black domination. I have cherished the ideal of a democratic and a free society in which all persons live together in harmony and with equal opportunities. It is an ideal which I hope to live for and to achieve; but if needs be, it is an ideal for which I am prepared to die.

(Nelson Mandela, Rivonia Treason Trial, 20 April 1964)

By confronting notions like racism, apartheid, differentiation, and discrimination which have been rooted in the African society for generations, we are confronting racial, political and economic differentiation and discrimination which are still dominating the African society and generating the privileges of individuals and groups. Documented video statements of workshop participants across various themes manifest the need for a more humane society, that is - the need for a regeneration of the society as a whole, not only the city of Cape Town, the South African Republic, but the regeneration of the entire continent.

The younger generation is definitely trying to get away from this way of thinking... as you would see in the metropolitan areas like in Cape Town - you do start to see people mixing. But in the older generation you would find that it is indeed very common for people to be quite resistant to the other race groups.
(Daniel Conradie, South African student)

With our generation I think it is even harder, because we don't speak about this openly. But it's very much evident even here where we are in the Western Cape. It is heavy segregation. There is one place for certain people, and another place for certain people. There is no overlap. For general population it is too hard. It's still very racist. There is a lot of work to do. (Tendai Gave, Zimbabwean student)

It's something very strong, quite deep inside the mentality and culture. But it's not racism. (Pauline Marie d'Avigneau, French student)

Our generation and the generation to come will actually fix that and break those boundaries between our minds on apartheid. It's quite a long time that this thinking came off and our forefathers actually invented this thinking; and now we are stuck in it actually (Edwan Coetzee, South African student)

The attack on racism should start in our minds. We should talk about racism and talk about the premises of every conversation. (Estuace Adonis, South African student)

The uncontrolled global boom of urban development and the unstoppable migration flows are creating the soil for mass conflicts. The territorial permeability and non-permeability of national boundaries are dictated by politics and the capital creating the spaces of social exclusivity and marginalisation, the spaces of prestige and brutality. Townships in Cape Town like Gugulethu, Nyanga, Langa, and Khayelitsha as the largest informal shack settlements, are becoming synonyms for discrimination, violence, marginalisation, fears ,...

The common goal is not to see us as a racist country, but I think that there is very much discrimination in terms of race. Currently, it is more based on economic than race discrimination. A lot of people are quite negative about black economic empowerment system, because they do feel that jobs are given to people that don't really deserve those jobs. That could be seen as discrimination towards other groups. But these are very good examples how people who got this opportunity make really big successes.... (Daniel Conradie, South African student)

It is therefore important to use projects like the 'Frontiers of Integration' which include as many different groups as possible, to appeal to the younger generation which has to strive for changes, face the social, economic, and political problems, and set up moral and ethical principles of the society and its values. It has to respect human rights, promote the role of education and integration, establish a dialogue between different groups, and try to find common solutions.

I think what those people did now - they integrated us. They brought the people from SA, Iran, Zimbabwe, France, Slovenia... and they integrated them and they showed them the problem and these people just got together and decided to resolve the problem. I think I will do the same thing. (Abbas Javadinia, Iranian student)

I try to be free and talk to everybody. (Evelyn Gyasi, Ghanaian student)

I got friends from all : black friends, white friends, everyone is the same. (Dale Smith, South African student)

Conditions have to be put in place for human dignity, a new social-economic-cultural integration, and the respect and the conservation of the invaluable intertwining of the varieties of the African nation.

I will make education free for everybody. (Pauline Marie d'Avigneau, French student)

I will give these people opportunity teaching them how to empower themselves. It's a lot of these people in townships. (Ashley Baker, South African student)

Poor is actually something in your mind... (Edwan Coetzee, South African student)

A movement without a vision is a movement without moral foundation. (Nelson Mandela, 2010)



SCHIZOPHRENIC CITY

Isabel Héroult

All cities have their shadow side, their territorial inequalities and injustices: ghetto suburbs in Europe, town centres abandoned by the upper classes in the US, slums and favelas around many of the world's cities. Cape Town is an extreme case, a schizophrenic city with a dual personality: on the one hand extremely pleasant, on the other extremely poor and violent. Its current structure is still the result of apartheid policies applied in the planning sphere. Two worlds live side-by-side in geographical proximity, but not together. On one side, in an extraordinary natural framework, the “wealthy” and protected city, a mix of European atmosphere and colonial architecture. The different neighbourhoods, the vibrant city centre or the villa districts by the ocean, all speak of the good life. Nature is everywhere, with luxuriant parks and gardens. The streets provide views sometimes to the cliffs of Table Mountain, sometimes to the ocean. Many travellers leave with this idyllic postcard image of Cape Town, without ever having seen its “shadow side”.

The Cape Flats, exclusively peopled by Black and Coloured, extend kilometres beyond the city centre, in a flat plain swept by the cold southern winds. The original townships have been joined by immense and constantly expanding slums, which now stretch as far as False Bay. Every day, new immigrants arrive, fleeing the misery of the countryside or other Southern African countries. It would be naive to think that political will alone would be enough to end quickly this poverty and exclusion. The process will take time. Nevertheless, from our foreign perspective, it seems that few signs of positive change are visible in urban policies. For example, why keep the walls enclosing the townships, as they have in Langa? Their demolition would have been a positive sign of the desire to bring a gradual end to ethnic segregation. The layout of the city reflects a fractured society in which the dominant class, still essentially Whites, sometimes seems unaware of the extent of the areas of poverty alongside which it lives.

The objective of the FRONTIERS OF INTEGRATION workshop was to propose solutions aiming to achieve reconnection and social mixing, to create links between the different communities of South African society by means of new urban configurations. The choice of the site, two golf courses near the city centre, might seem provocative. In fact, it is a realistic and strategic proposal, guided by the wish to increase urban density around the city centre, in order to bring together the different types of populations and improve mobility.

The projects, produced by students from multiple backgrounds and 17 different nationalities, have the failings of excessively speed, but they form a reservoir of ideas, a preliminary to an operational project. The solutions proposed are highly diverse, but revolve around the same themes: connecting scales from region to neighbourhood, housing types halfway between individual and semi-collective, a focus on public space and the relationship with nature, connections to adjacent neighbourhoods, better links and public transport, etc. They imagine forms of “living together”, trying to create the conditions to foster neighbourhood life, a sense of community.

Cities need iconic projects to crystallise the metamorphoses of a society. The building of a scheme such as Frontiers of Integration near the city centre would be a strong signal of a profound change taking place in the organisation of South African society, an eventual end to the stigmata of history and the policy of apartheid.

Picture page 82 : Clifton.

Picture on the right : Khayelitsha Shanty town.

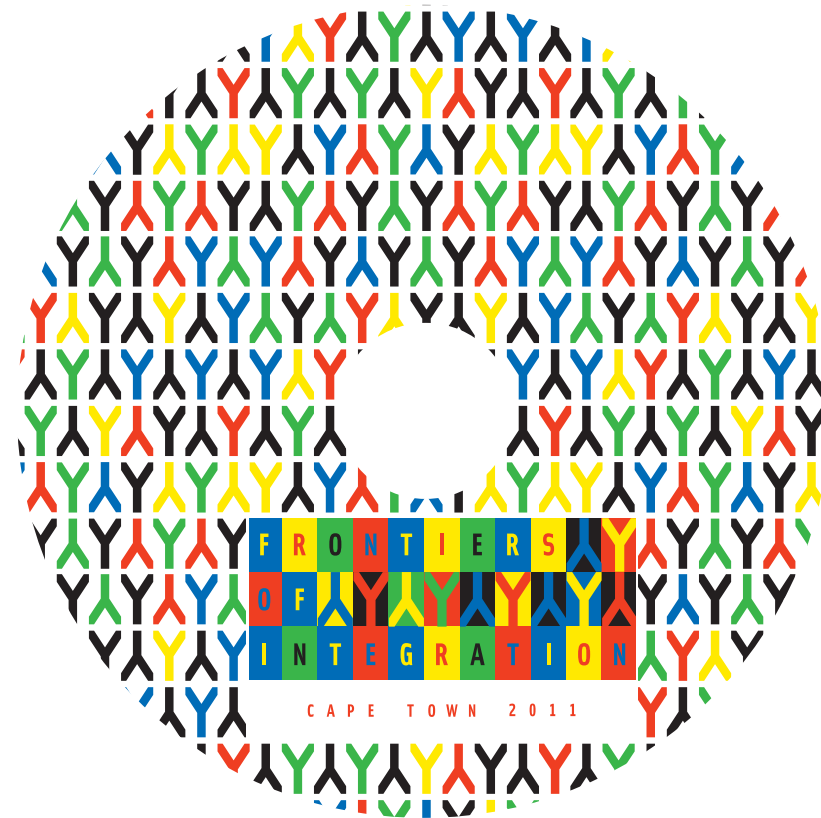


Workshop Frontiers of Integration organised and produced by CS Studio.
Booklet produced and edited by Hérault Arnod Architectes.
Student interviews produced by Monochrome Architects


**CS STUDIO
ARCHITECTS**

**HERAULT
ARNOD
ARCHITECTES**

**MONOCHROME
LOGO**



Artistic Director : Eric Leprince / Super Regular
Graphic Design : Pauline Marie d'Avigneau / Hérault Arnod Architectes



The FRONTIERS OF INTEGRATION international design workshop was held in Cape Town in April 2011. The objective was to propose solutions aiming to achieve reconnection and social mixing, to create links between the different communities by means of new urban configurations. In South Africa cities the consequences of colonial and Apartheid planning persist and urban areas tend to be ethnically and culturally specific, separated by geographic and physical features. As a result much of the labour urban force still live in townships outside the city. The choice of the site, two golf courses close to the city, was guided by the wish to increase urban density around the centre, in order to bring together the different types of populations and improve mobility.

The projects, produced by students from multiple backgrounds and 17 different nationalities, form a reservoir of ideas. The solutions proposed are highly diverse, but revolve around the same theme: they imagine forms of “living together”, trying to create the conditions to foster neighbourhood life, a sense of community.

2

0

1

1